

# Geofence Solution in the Event of Pandemic

[Main Page](#) > [General Information](#) > [Usage scenarios](#) > **Geofence Solution in the Event of Pandemic**

□

## Contents

- [1 Solution description](#)
- [2 What you need for a solution?](#)
- [3 Installation](#)
- [4 Configuration](#)
  - [4.1 1. Prerequisites:](#)
    - [4.1.1 1.1. Read through First start guide](#)
    - [4.1.2 1.2. Understanding what manual Geofence has to offer.](#)
- [5 Parsing information](#)
  - [5.1 1.Prerequisites:](#)
    - [5.1.1 1.1. Open TCP/UDP port](#)
    - [5.1.2 1.2. Read Java parser first start guide](#)
  - [5.2 2. Parsing example:](#)
- [6 Demonstration in platform](#)

## Solution description

One of the more advanced features of GPS trackers is the ability to create Geofence scenarios in a real-time with triggered alerts. Geofences are designated areas or zones that can be defined on a map or as a distance from the specific location. The feature may help to comply with some pandemic lockdown measures and greatly benefit private car owners, families, corporate fleet managers and business owners. All Teltonika GPS tracker models have Geofence as a standard feature.

## What you need for a solution?

- Geofence solution is supported by **all Teltonika devices**. To show this scenario, we will be using the [FMM130](#) model.
- The SIM card in order to receive data to your server.
- [Teltonika Configurator](#) to make the configurations for your Teltonika device.
- [FOTA WEB](#) to send the configurations to your device remotely.

## Installation

Since Geofence can be used in all of Teltonika devices, it is important to follow your specific device [mounting recommendations](#). This is because if you were to install the tracker following the instructions of a different one, your device may not work properly in the end. Also, we offer a wide range of trackers that have different connectors, some of the devices we offer are "Plug and Track" (devices that have OBD-II connectors), other may demand more wiring work to be done. The list of all Teltonika Fleet Management devices can be found [here](#).

# Configuration

## 1. Prerequisites:

1.1. Read through [First start guide](#)

1.2. Understanding what [manual Geofence](#) has to offer.

## 2. Configuration of Manual Geofence feature



[Parameter ID](#) - Parameter name GPRS settings:

- [2001](#) - APN
- [2002](#) - APN username (if there are no APN username, empty field should be left)
- [2003](#) - APN password (if there are no APN password, empty field should be left)



Server settings:

- [2004](#) - Domain
- [2005](#) - Port
- [2006](#) - Data sending protocol (0 - TCP, 1 - UDP)

After successful GPRS/SERVER settings configuration, FMM130 device will **synchronize time** and **update records to the configured server**. Time intervals and default I/O elements can be changed by using [Teltonika Configurator](#) or [SMS parameters](#).

### Manual geofence selection

1 geozone

### Manual geofence 1

#### Feature

Disable	Low Priority
High Priority	Panic Priority

#### Generate Event

No Event	On Exit
On Entrance	On Both

#### Eventual Records

Disable	Enable
---------	--------

#### Frame Border (m)

1

#### Shape Type

Circle	Rectangle
--------	-----------

#### Latitude (Y1)

54.62445

#### Longitude (X1)

25.27162

#### Latitude (Y2)

54.65659

#### Longitude (X2)

25.296

#### Overspeeding

Disable	Enable
---------	--------

#### Max Allowed Speed (km/h)

90

#### Send SMS To

868686866

#### SMS Text

Geozone Zone 1

### Manual Geofence settings:

- 20100 - Feature priority (0 - Disable, 1 - Low, 2 - High, 3 - Panic)
- 20101 - Generate Event (0 - No Event, 1 - On Exit, 2 - On Entrance, 3 - On Both)
- 20102 - Eventual Records (0 - Disable, 1 - Enable)
- 20103 - Frame Border (m)

- 20104 - Shape Type (0 - Circle, 1 - Rectangle)
- 20105 - Radius (m)
- 20106 - Coordinate Y1
- 20107 - Coordinate X1
- 20108 - Coordinate Y2
- 20109 - Coordinate X2

- 20110 - Overspeeding (0 - Disable, 1 - Enable)
- 20111 - Max allowed speed (km/h)

- 7025 - Phone Number
- 8025 - SMS Text

**Note:** Radius is only calculated if the chosen Shape Type is a Circle. In this example, Radius cannot be seen since the shape chosen is the Rectangle. Also, Latitude Y2 and Longitude X2 are only used when Rectangle is the chosen shape.



It is also important to mention that the map in the [Manual Geofence](#) function section has a few features as well if you wish to make some adjustments using the interface:

Manual Geofence also has a nifty feature that allows the user to draw their wanted Geofence using only the mouse. There are 4 buttons that make this feature into reality.

First two are for drawing a circle or a rectangle. Simply press on the button, drag your mouse for the area you want the Geofence to be located and release. The Configurator will automatically calculate the size.

The 3rd button is for deleting the Geofence which is currently chosen.

The last button on the interface is used to zoom in on all of the available geozones.

**Quickstart:** From default configuration to Geofence crossing detection in two SMS:

```
" setparam
2001:APN;2002:APN_username;2003:APN_password;2004:Domain;2005:Port;2006:0"

" setparam
20100:2;20101:2;20104:1;20106:latitudeY1;20107:longitudeX1;20108:latitudeY2;2
0109:longitudeX2"
```

This SMS will set up your device to report Geofence Crossing Detection scenario to the server.

**Note:** We're sending two instead of one configuration messages since one SMS can contain up to 160 characters. For this scenario, we exceed the maximum allowed character amount. Therefore, we split the message into two.

Parsing information

1.Prerequisites:

- 1.1. Open [TCP/UDP port](#)
- 1.2. Read Java parser [first start guide](#)

2. Parsing example:

Unparsed received data in hexadecimal stream

00000000000000460801000001776D581890010F07C39A
209CE0C2009C009D05000F9B0D06EF01F0001505C80045019B0105B5000BB6000
A424257430F8044000002F1000060191000000BE1000100005139

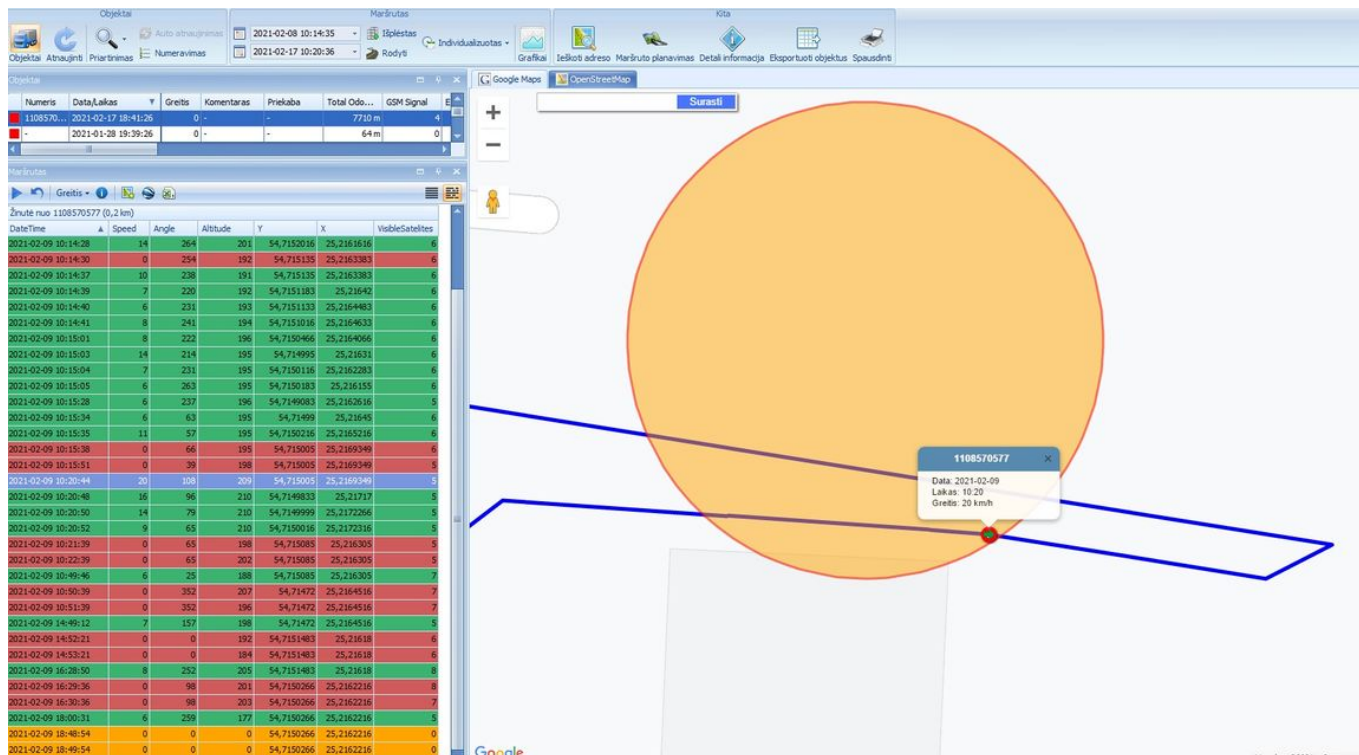
AVL Data Packet		
AVL Data Packet Part	HEX Code Part	
Zero Bytes	00 00 00 00	
Data Field Length	00 00 00 46	
Codec ID	08 (Codec 8)	
Number of Data 1 (Number of Total Records)	01	
Timestamp	00 00 01 77 49 BC 8E 70 (Thursday, February 4, 2021 2:00:26 PM)	
Priority	01	
Longitude	0F 07 C3 9A	
Latitude	20 9C E0 C2	
Altitude	00 9C	
Angle	00 9D	
Satellites	05	
Speed	00 0F	
Event IO ID	9B (AVL ID: 155, Name: Geofence zone 01)	
N of Total ID	0D	
N1 of One Byte IO	06	

1'st IO ID	EF (AVL ID: 239, Name: Ignition)
1'st IO Value	01
2'nd IO ID	F0 (AVL ID: 240, Name: Movement)
2'nd IO Value	00
3'rd IO ID	15 (AVL ID: 21, Name: GSM Signal)
3'rd IO Value	05
4'th IO ID	C8 (AVL ID: 200, Name: Sleep Mode)
4'th IO Value	00
5'th IO ID	45 (AVL ID: 69, Name: GNSS Status)
5'th IO Value	01
6'th IO ID	9B (AVL ID: 155, Name: Geofence zone 01)
6'th IO Value	01 (00 - target left zone, 01 - target entered zone, 02 - over speeding end, 03 - over speeding start)
N1 of Two Byte IO	05
1'st IO ID	B5 (AVL ID: 181, Name: GNSS PDOP)
1'st IO Value	00 0B
2'nd IO ID	B6 (AVL ID: 182, Name: GNSS HDOP)
2'nd IO Value	00 0A
3'rd IO ID	42 (AVL ID: 66, Name: External Voltage)
3'rd IO Value	42 57
4'th IO ID	43 (AVL ID: 67, Name: Battery Voltage)
4'th IO Value	0F 80
5'th IO ID	44 (AVL ID: 68, Name: Battery Current)
5'th IO Value	00 00
N4 of Four Bytes IO	02
1'st IO ID	F1 (AVL ID: 241, Name: Active GSM Operator)
1'st IO Value	00 00 60 19
2'nd IO ID	10 (AVL ID: 16, Name: Total Odometer)
2'nd IO Value	00 00 0B E1
N8 of Eight Bytes IO	00
Number of Data 2 (Number of Total Records)	01
CRC-16	00 00 51 39

## Demonstration in platform

TAVL: Open TAVL → select client → Track. By choosing a certain date frame for the device that you're watching, you can see the events that are generated when the Geofence is crossed (depending on what was chosen on the Configurator: On entry, on exit, on both).





Wialon: Open WIALON → open messages → push unit ( select your device) → choose the date from which to which to show the records → select message (data messages) → push execute button and you will see all information.

