



FM6 FMB6

Professional tracker

**How to connect
FMB6 to Carrier
freezers**

Main installation location is displayed in the picture below:



Figure 1 Panel cover

Remove the panel stickers marked in the picture:



Figure 2 Fuse panel stickers location

Unscrew the panel screws marked in the picture and open the panel cover:



Figure 3 Location of the screws

The picture below displays the location of the electric panel where connectors can be found:



Figure 4 The main connector location

All of the the connectors displayed in screenshot, find the marked connector:

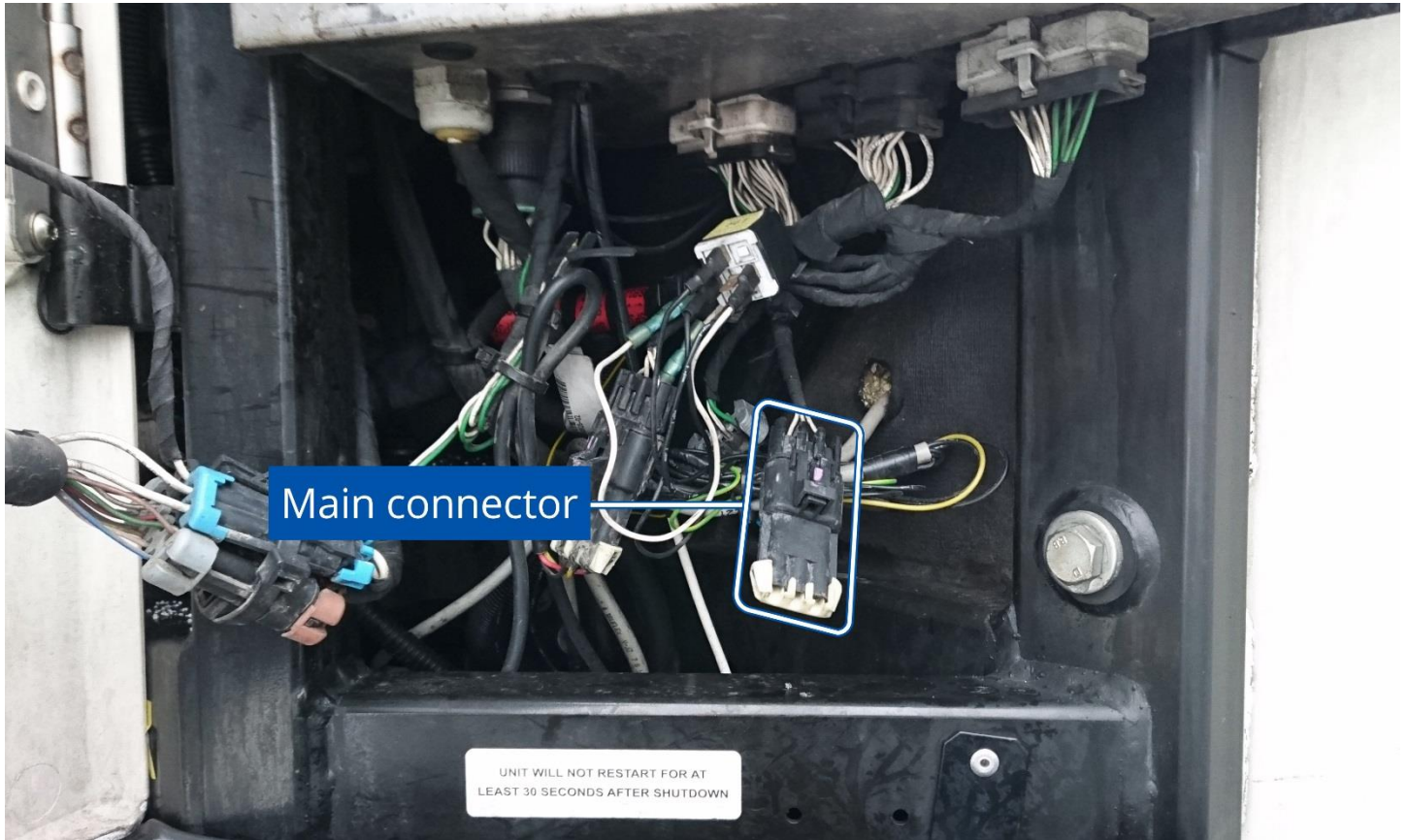


Figure 5 The main connector location

The connector should have a cap attached as displayed in the close up screenshot, unclip the cap.

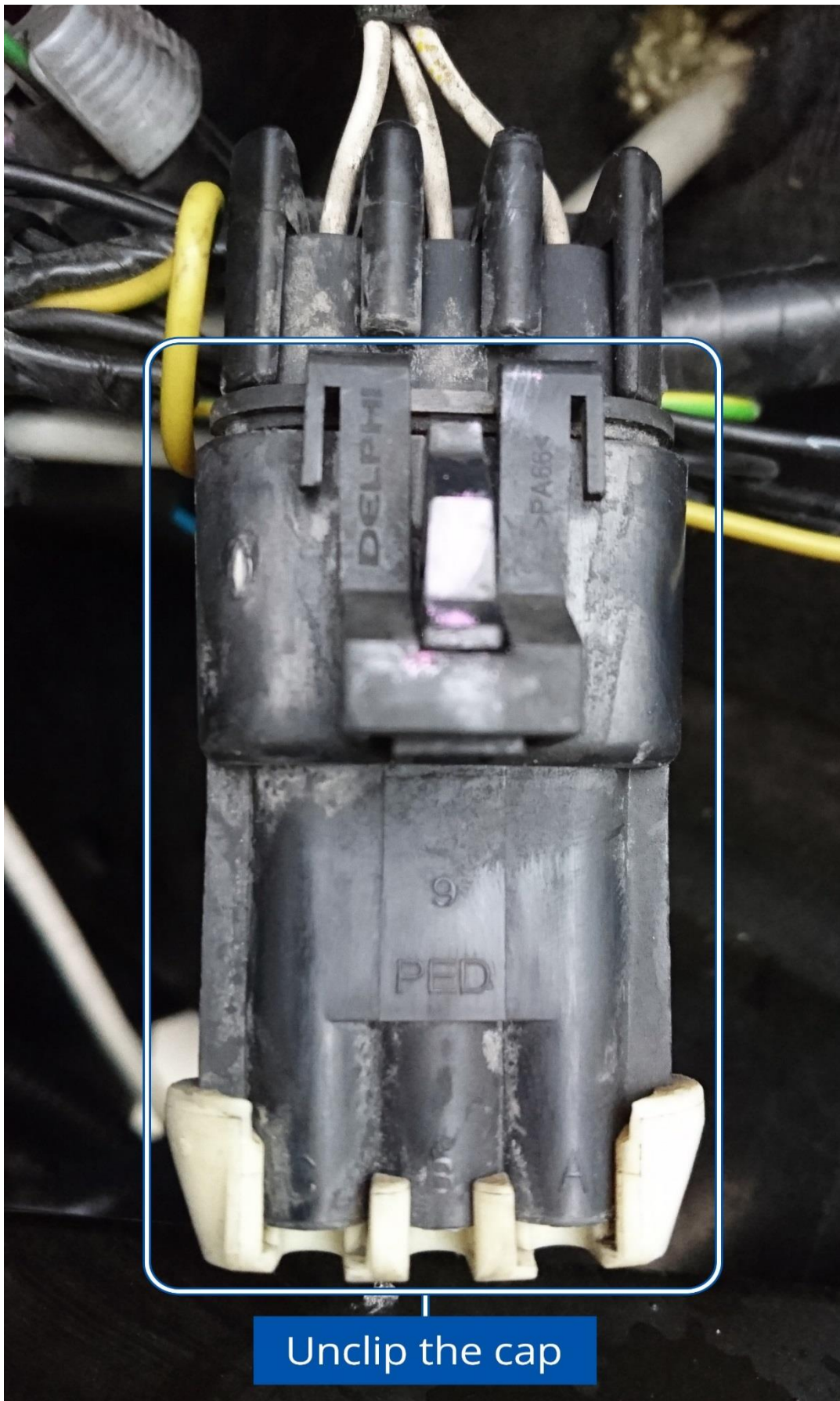


Figure 6 The main connector cap

The FMB6 devices can be installed in the panel as displayed in this example:

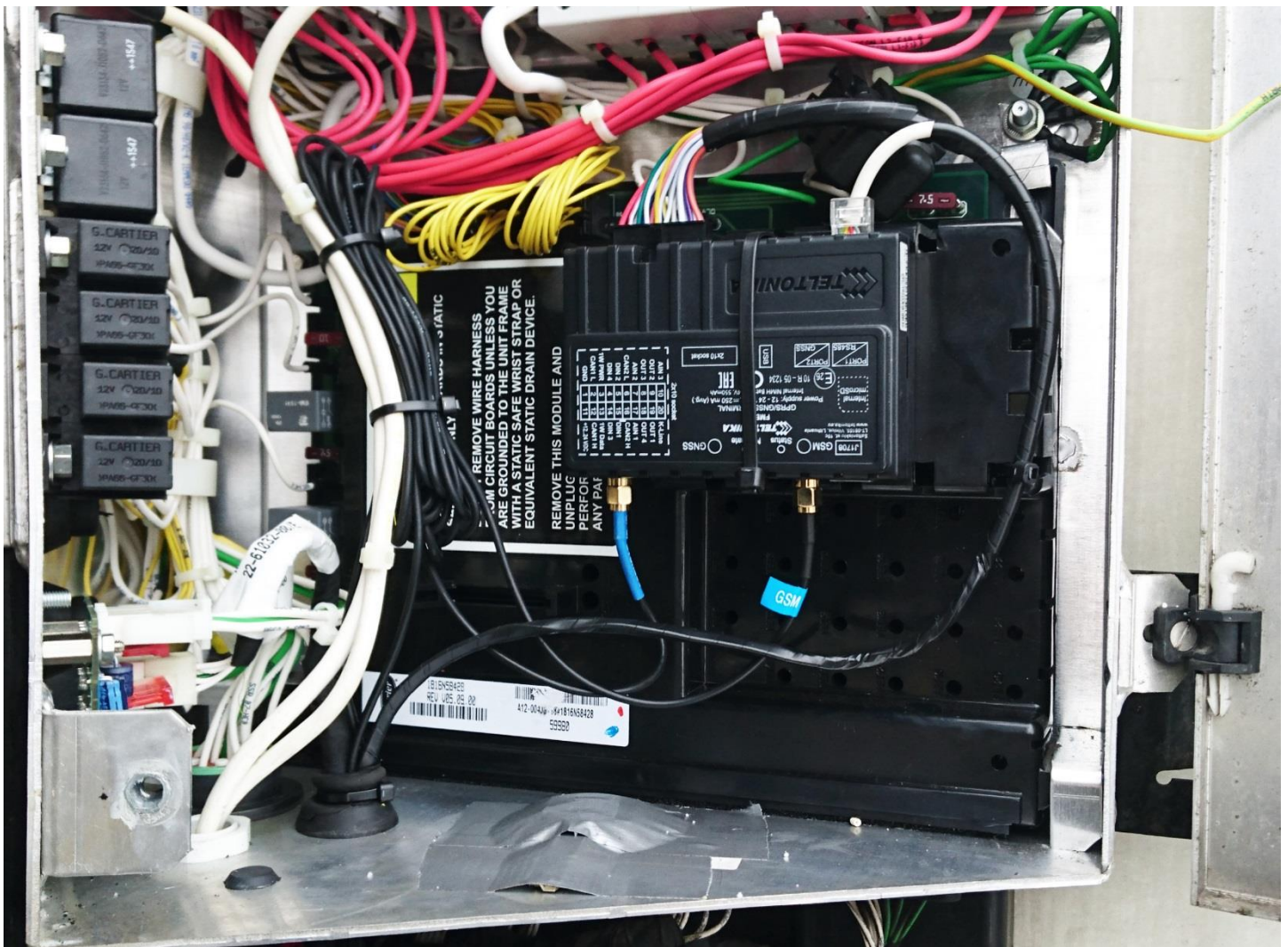


Figure 7 An example of FMB6 device installed in the panel

Device's wires lead down through gasket to the connector as displayed below:

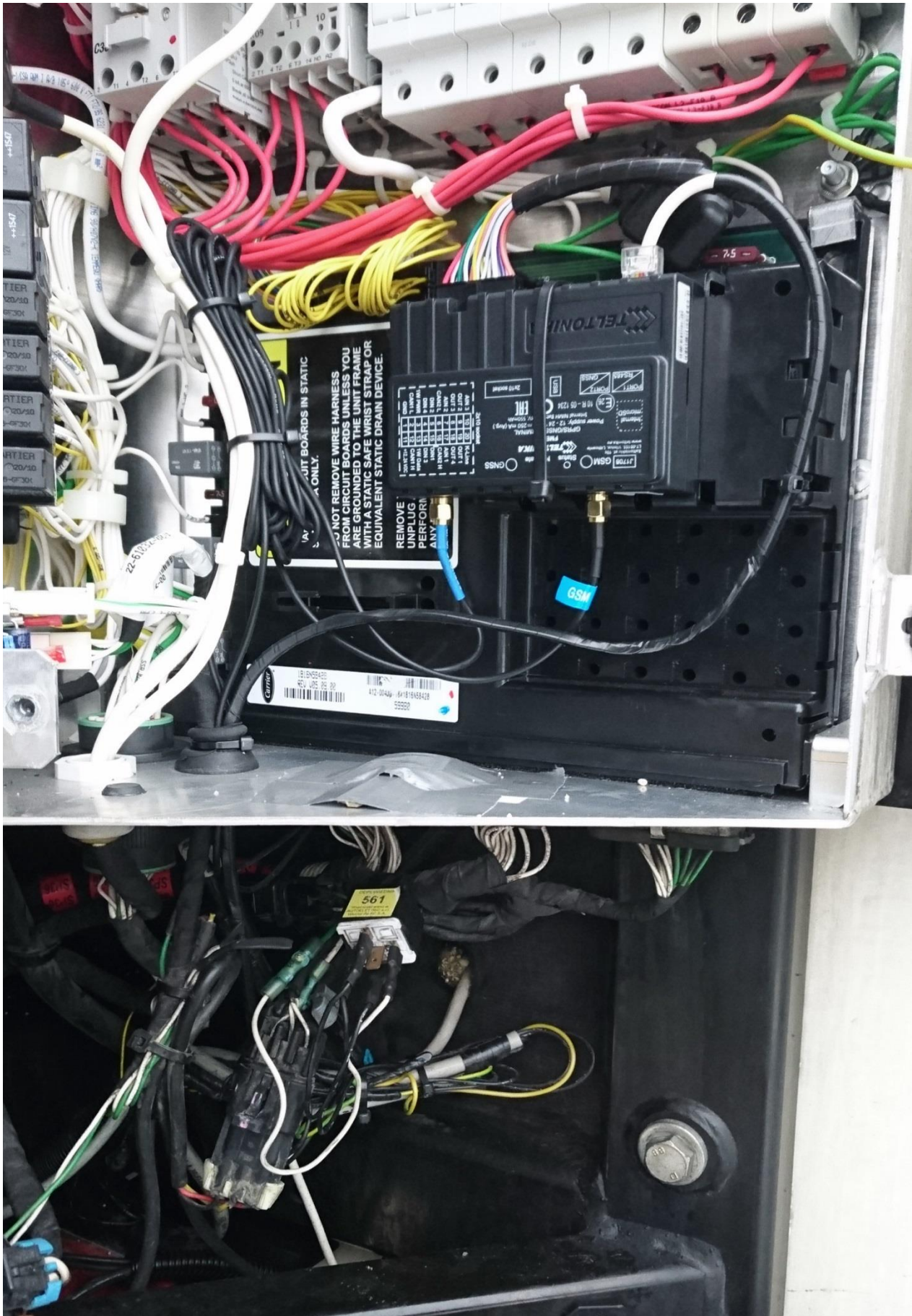


Figure 8 An example of FMB6 device installed in the panel full view

Connect the FMB6 wires to the main connector in the electric panel exactly as shown below. Wires marked in the screenshot (RS232 GND(Black), RS232 TX (Orange/Blue), RS232 RX(Yellow/Green)).

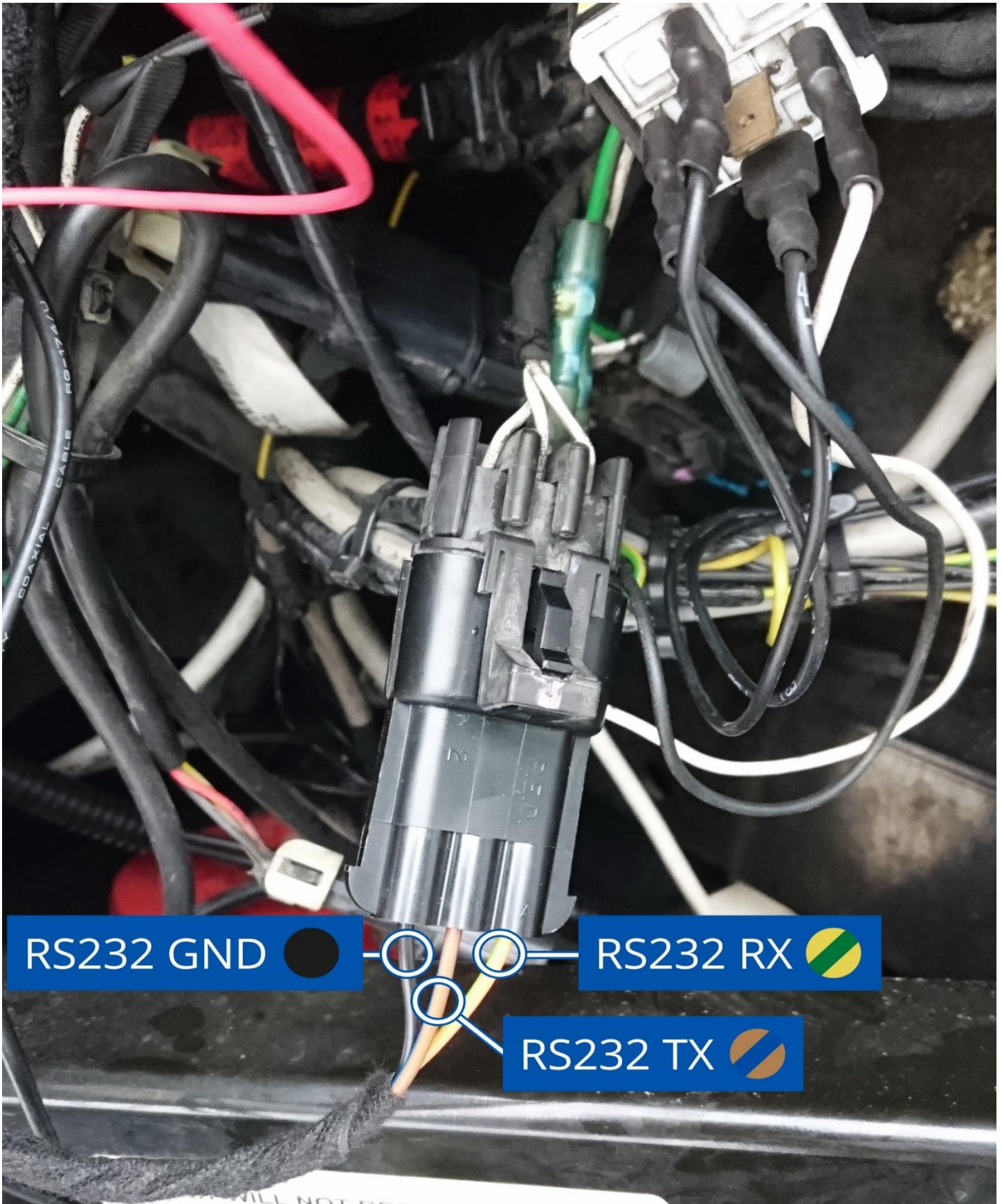


Figure 9 The connection of the FMB6 device's wires to the main connector

Make sure FM6 device is configured to receive data from “Carrier Freezer”. To do this, enter the configurator window, select **RS232 \ RS485** section displayed in the screenshot below and configure accordingly (**COM1 Settings, Mode “Carrier Freezer”, Baudrate: 9600**)

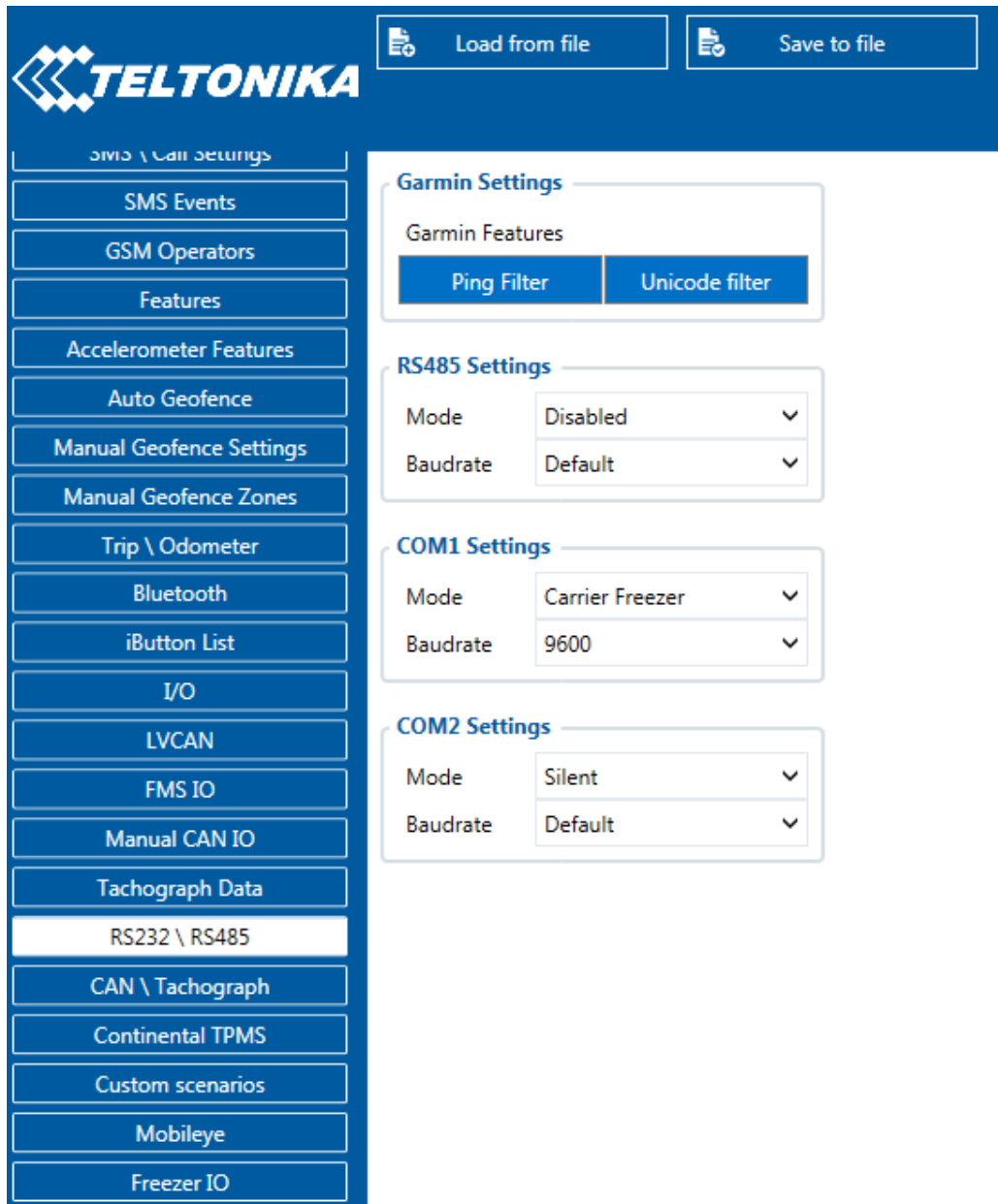


Figure 10 The configurator’s RS232 \ RS485 settings section

The screenshot below displays **Freezer I/O** parameters section, here you can set up your device to send required parameters.

Input Name	Priority				Low Level	High Level	Event Only		Operand
	None	Low	High	Panic			Yes	No	
MT Temperature (C)	None	Low	High	Panic	0	0	Yes	No	Monitoring
SetPoint 1 Temperature	None	Low	High	Panic	0	0	Yes	No	Monitoring
Ambient Temperature	None	Low	High	Panic	0	0	Yes	No	Monitoring
Compressor Coolant Temperature	None	Low	High	Panic	0	8	Yes	No	Monitoring
Fridge Compressor RPM	None	Low	High	Panic	0	0	Yes	No	Monitoring
Fridge Compressor Config	None	Low	High	Panic	0	0	Yes	No	Monitoring
Fridge Battery Voltage (V * 10)	None	Low	High	Panic	0	0	Yes	No	Monitoring
Compressor Motor Work Minutes (HM)	None	Low	High	Panic	0	0	Yes	No	Monitoring
Freezer Work Minutes (HMT)	None	Low	High	Panic	0	0	Yes	No	Monitoring
Electric Minutes (HME)	None	Low	High	Panic	0	0	Yes	No	Monitoring
Fridge Door State	None	Low	High	Panic	0	0	Yes	No	Monitoring
Fridge Instalation Serial	None	Low	High	Panic	0	0	Yes	No	Monitoring
Fridge Trailer Registration Number	None	Low	High	Panic	0	0	Yes	No	Monitoring
Error Count	None	Low	High	Panic	0	0	Yes	No	Monitoring
Fridge Alarm 1	None	Low	High	Panic	0	0	Yes	No	Monitoring
Fridge Alarm 2	None	Low	High	Panic	0	0	Yes	No	Monitoring
Fridge Alarm 3	None	Low	High	Panic	0	0	Yes	No	Monitoring

Figure 11 The configurator's Freezer I/O settings section