

# FMC640

## PROFESSIONAL LTE/GNSS TERMINAL

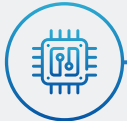
FMC640 will maximize your fleet efficiency with features like FMS CAN data (J1939), fuel CAN data (J1708), tachograph live data (K-Line), remote tachograph file download, various third party RS232 or RS485 devices support and Dual-SIM. Terminal is suitable for applications like international logistics, refrigerated transport, agriculture, construction & mining, security & emergency services and even more.



Reliable 4G connection with fallback to 3G network



Double network reliability and multiple network selection



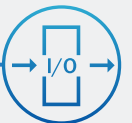
Enhanced processor



RS232/RS485 serial communication interfaces



CAN data reading from vehicles and specialized transport



Wide range of Input and Output elements



## USE CASES



CONSTRUCTION AND MINING



HEAVY DUTY TRANSPORT



PUBLIC SAFETY SERVICES



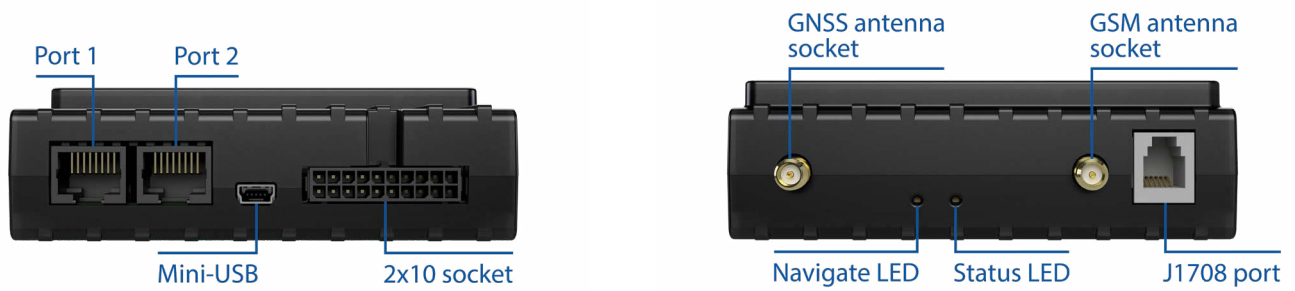
REFRIGERATED TRANSPORT



INTERNATIONAL LOGISTICS



AGRICULTURE TRANSPORT



## Module

Name	Quectel EG91-E, Quectel EG91-EX, Quectel EG91-NS, Quectel EG91-NA
Technology	LTE(Cat1)/3G(UMTS/HSPA)/2G(GSM/GPRS)/GNSS

## GNSS

GNSS	GPS, GLONASS, GALILEO, BEIDOU, QZSS
Protocol compatible	NMEA, GGA, GGL, GSA, GSV, RMC, VTG
Receiver	Tracking: 33/99 acquisition channels
Tracking sensitivity	-165 dBm
Accuracy	< 3 m
Hot start	< 1 s
Warm start	< 25 s
Cold start	< 35 s

## Cellular

Technology	LTE Cat 1, UMTS, GSM	
2G bands	EG91-E:	GSM: B3/B8
	EG91-EX:	GSM: B3/B8
3G bands	EG91-E:	WCDMA: B1/B8
	EC91-EX:	WCDMA: B1/B8
	EC91-NA:	WCDMA: B2/B4/B5
	EC91-NS:	WCDMA: B2/B4/B5
4G bands	EG91-E:	LTE FDD: B1/B3/B7/B8/B20/B28A
	EC91-EX:	LTE FDD: B1/B3/B7/B8/B20/B28
	EC91-NA:	LTE FDD: B2/B4/B5/B12/B13
	EC91-NS:	LTE FDD: B2/B4/B5/B12/B13/B25/B26
Data transfer	LTE:	LTE FDD: Max 10Mbps (DL)/Max 5Mbps (UL)
	UMTS:	WCDMA: Max 384Kbps (DL)/Max 384Kbps (UL)
	GSM:	GPRS: Max 107Kbps (DL)/Max 85.6Kbps (UL)
Data support	SMS (text/data)	

## Power

Input voltage range	10 - 30 V DC with overvoltage protection
Internal Back-up battery	550 mAh Ni-Mh, 8,4 V battery

## Physical specification

Dimensions	104,1 x 76,8 x 31,5 mm (L x W x H)
Weight	197 g

**Operating environment**

Operating temperature (without battery)	-40 °C to +85 °C
Storage temperature (without battery)	-40 °C to +85 °C
Operating humidity	5% to 95% non-condensing
Ingress Protection Rating	IP41

**Interface**

Digital Inputs	4
Digital Outputs	4
Analog Inputs	4
1-Wire interface	1
RS232	2
RS485	1
CAN J1939	2
J1708	1
K-line	1
GNSS antenna	External High Gain
Cellular antenna	External LTE CAT 1 High Gain
USB	2.0 Mini-USB
LED indication	2 status LED lights
SIM	2x SIM Card (Dual-SIM)
Memory	2 MB internal flash memory and external Micro SD card

**Features**

Movement detection	Accelerometer
Scenarios	Green/Eco Driving, Over Speeding detection, Jamming detection, Excessive Idling detection, Towing detection, Crash detection, Immobilizer, iButton Read Notification
Functionalities	Auto Geofencing, Manual Geofencing, Trip detection, Odometer, Fuel counter, GNSS Unplug Detection, DDD download and Tacho online data, Offline tracking
Supported peripherals	Garmin, RFID RS232, RFID 1-Wire, iButton 1-Wire, Temperature 1-Wire, LV-CAN200, ALL-CAN300, CAN-CONTROL, CAN FMS (J1939, J1708), K-line data, Continental tire pressure measurement sensor, Iridium SBD (TSM232), Carrier freezer, Log Mode, NMEA, TCP ASCII/Binary
Sleep modes	GPS Sleep, Online Deep Sleep, Deep Sleep
Configuration and firmware update	FOTA Web, FOTA, Teltonika Configurator
SMS	Configuration, Events, DOUT control, Debug
GPRS commands	Configuration, DOUT control, Debug
Time Synchronization	GNSS, NITZ, NTP
Fuel monitoring	LLS (Analog), Digital LLS (RS232, RS485), LV-CAN200, ALL-CAN300, CAN-CONTROL, CAN FMS, Ultrasonic level sensor
Ignition detection	Digital Input, Accelerometer, External Power Voltage