



# FM6

# FMB6

Professional tracker

Tachograph files  
download with  
Wialon platform

## Table of content

1. Introduction .....	3
2. Preparing company card .....	3
3. Wialon server configuration .....	4
2.1 Device registration .....	4
2.2 Company card registration .....	5
2.3 Creating GPRS command .....	6
4. Teltonika device configuration .....	7
3.1 Getting FMB640 configured .....	7
3.2 Getting FM6300 and FMB630 configured .....	7
5. Tachograph files download .....	8
4.1 Sending GPRS command to device .....	8
4.2 Configuring periodical Download .....	9
6. Tachograph files storage .....	11

## 1. Introduction

This step by step instruction shows how with FM6/FMB6 device via “Wialon” platform from VDO Digital – DTCO 1381 and Stoneridge download DDD files.

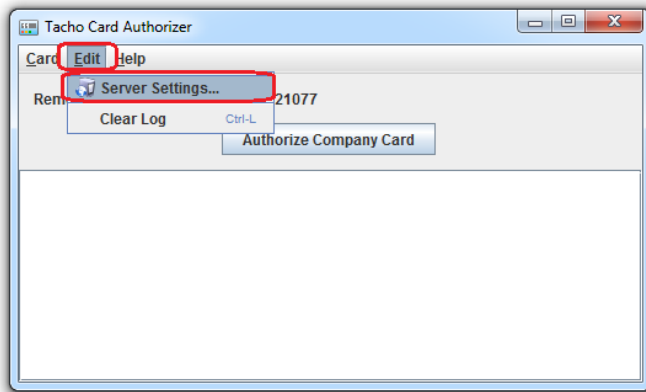
To download DDD files from tachograph to device need send GPRS command which initiate DDD files download, so Teltonika device should be connected to server.

## 2. Preparing company card

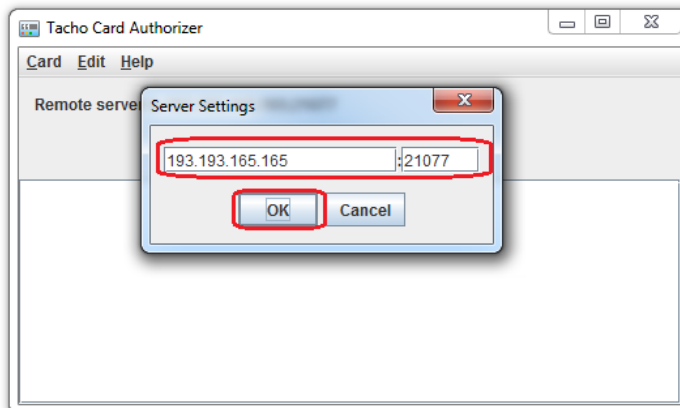
Download “Tacho Card Authorizer” application from following link:

<https://distro.gurtam.com/soft/tca/tca.zip>

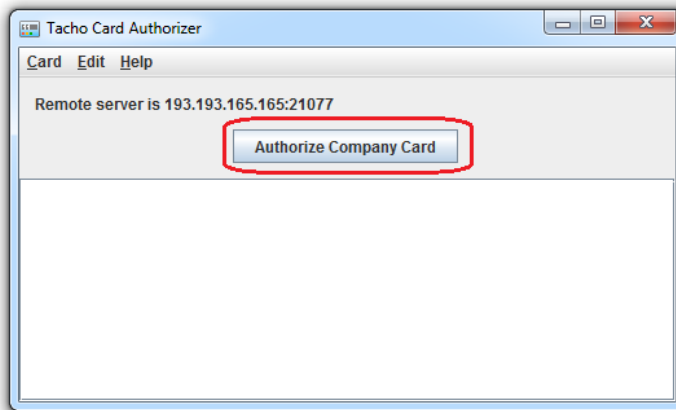
Run *tca.exe* file. Press Edit -> Server Settings;



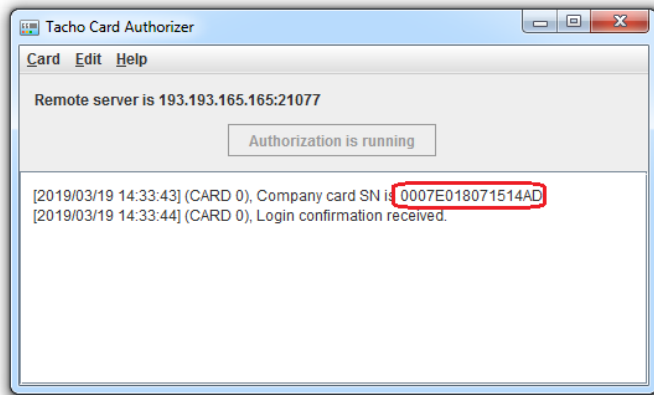
In pop up window fill like shown. IP: 193.193.165.165, PORT: 21077. Please make note that IP address depends of server which you use. It automatically appear in Wialon when registering object;



Connect card reader with company card to PC and press “Authorize Company Card”;



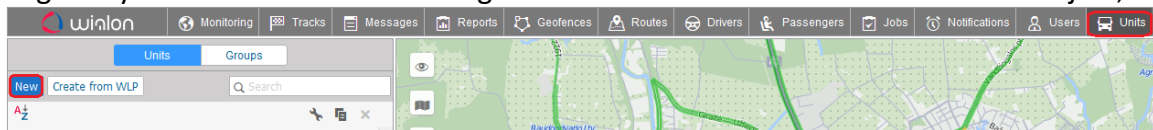
Copy company card serial number;



### 3. Wialon server configuration

#### 2.1 Device registration

Login to your “Wialon” account and go to “Units” tab. Press “New” to add new object;



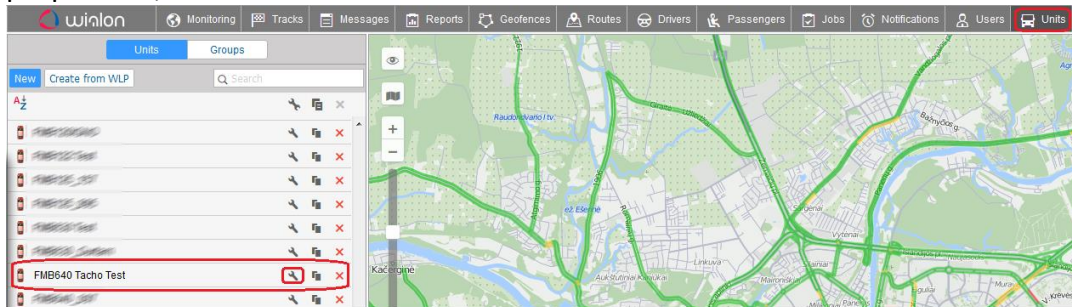
In General tab fill device information. Enter device name, select device type and enter IMEI. Server address will appear automatically depending on the selected device type;

**New Unit**

Name: \* FMB640 Tacho Test  
 Device type: \* Teltonika FMB640  
 Server address: 193.193.165.165:21756  
 Unique ID: 351234567891234

## 2.2 Company card registration

In “Wialon” platform go to “Units” tab, select your FM6/FMB6 device and press “Unit properties”;



In General tab, press “Configure device for the unit”;

**General**

Name: \* FMB640 Tacho Test  
 Device type: \* Teltonika FMB640  
 Server address: 193.193.165.165:21756

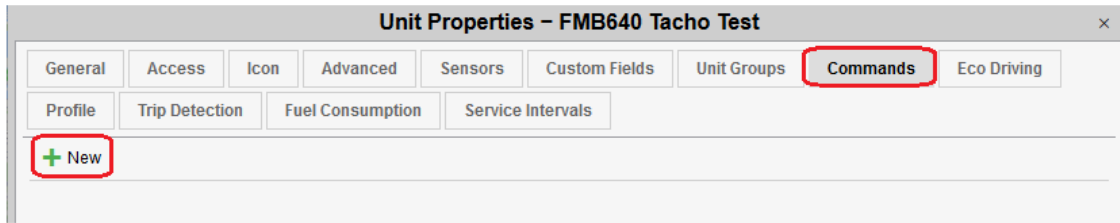
Scroll down and in “Company card SN” field insert company card SN number which was copied in TCA application;

Device configuration

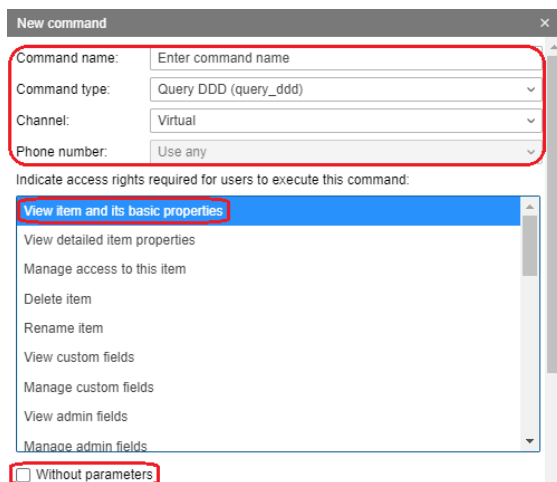
Parameter name	Parameter value	Reset
Display last driver status:	<input type="checkbox"/>	<input type="checkbox"/>
Use A614 protocol for sending routes to Garmin:	<input type="checkbox"/>	<input type="checkbox"/>
Company card SN:	0007E018071514AD	<input type="checkbox"/>
Vehicle Registration Nation:	<input type="text"/>	<input type="checkbox"/>
Vehicle Registration Number:	<input type="text"/>	<input type="checkbox"/>

## 2.3 Creating GPRS command

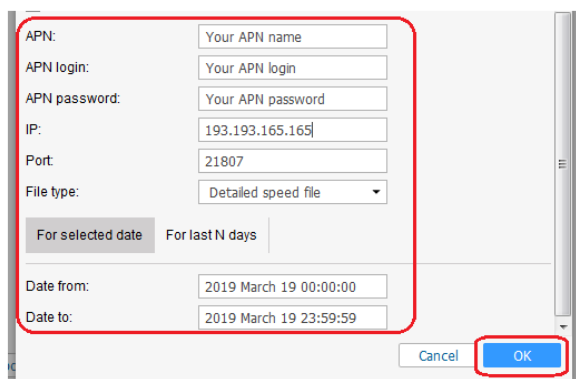
Go to “Command” tab to create command for DDD files download;



Create GPRS command as shown. Enter your command name. Command type select “Query DDD (query\_ddd)” – this is command to request all data from driver card or tachograph. Recommend to use **Virtual** channel for DDD files download – if device does not have GPRS session active or is not able to establish connection, GPRS command for DDD file download will be sent once GPRS connection recovers. **TCP** channel also can be used and the main difference from Virtual channel is that GPRS command will not be delivered if device will not have active GPRS session or connection.



Scroll down and enter remaining parameters and choose file type which you want to download. IP 193.193.165.165 and PORT: 21807. IP address and PORT automatically appear in Wialon when registering object depending on the selected device type;



## 4. Teltonika device configuration

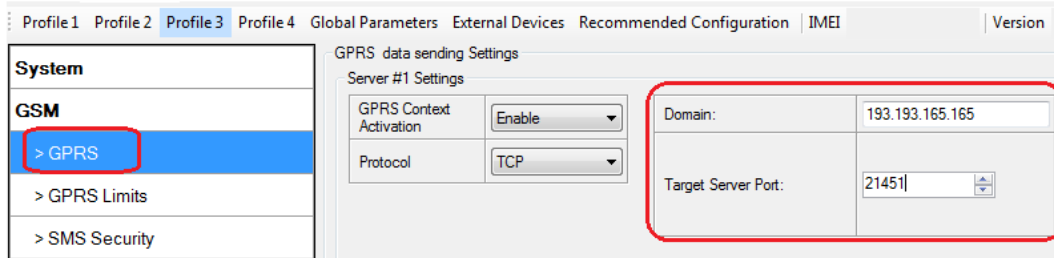
### 3.1 Getting FMB640 configured

Configure FMB640 device to send data to Domain: 193.193.165.165 and PORT: 21756. IP address and PORT automatically appear in Wialon when registering object depending on the selected device type;

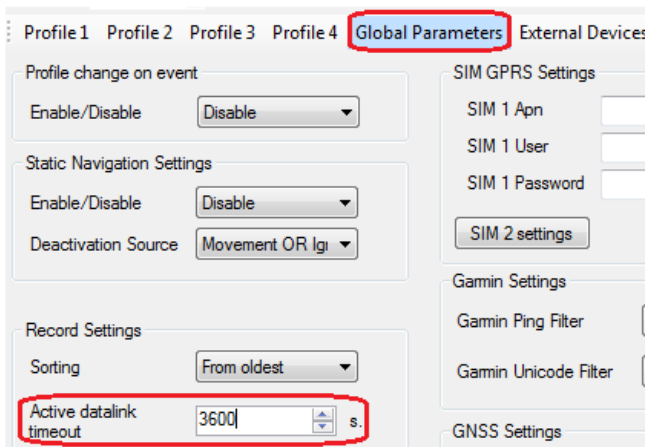
To initiate tachograph files download, device should keep data link with wialon server. In order to keep constant link with server – recommended to increase “Open link timeout” parameter for 3600s or more;

### 3.2 Getting FM6300 and FMB630 configured

Configure FM6300/FMB630 device to send data to Domain: 193.193.165.165 and PORT: 21451. IP address and PORT automatically appear in Wialon when registering object depending on the selected device type;



To initiate tachograph files download, device should keep data link with Wialon server. In order to keep constant link with server – recommended to increase “Open link timeout” parameter for 3600s or more;

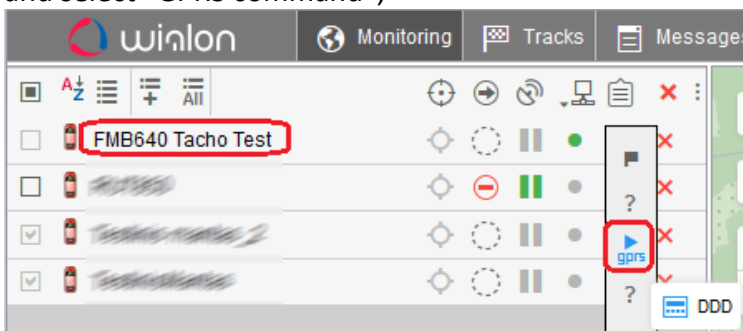


## 5. Tachograph files download

### 4.1 Sending GPRS command to device

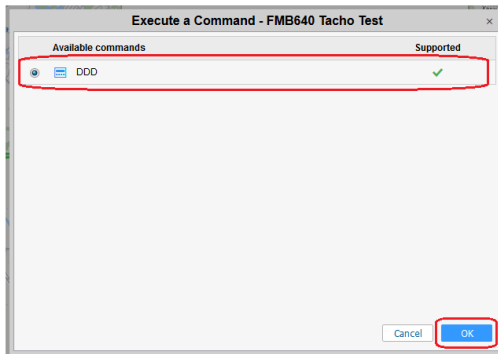
To send GPRS command, device should be connected to server. In Monitoring tab under “Connection state” you will see if device is connected. If you see green circle, it’s mean that device is online and you can start DDD files download.

Select device from which you want download DDD files, press “Open additional menu” and select “GPRS command”;

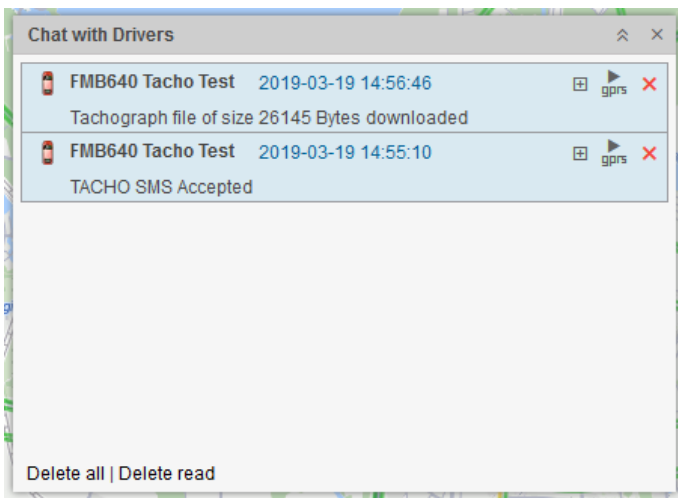




Choose created earlier command and send it to device;



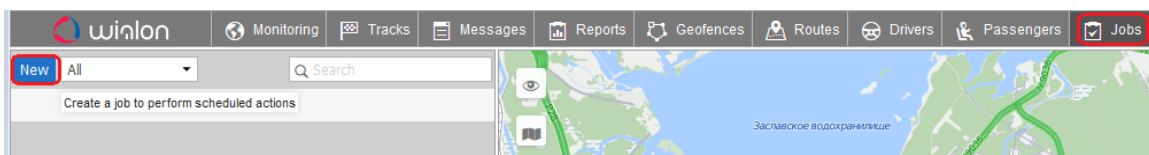
When command will successfully sent to device and when DDD file will be downloaded you will see it in notification window;



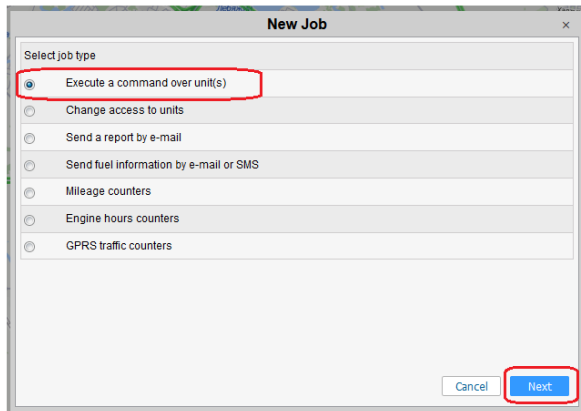
## 4.2 Configuring periodical Download

In Wialon platform possible create schedule for periodical tachographs files download. Once you will create action, server will automatically send GPRS command to device to initiate DDD files download.

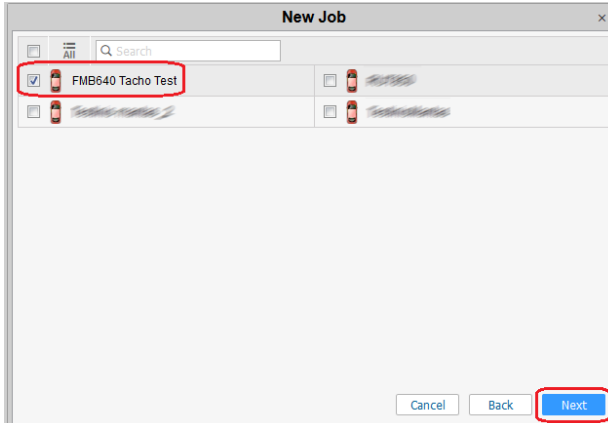
Go to Jobs tab and press “Create a job to perform scheduled actions”;



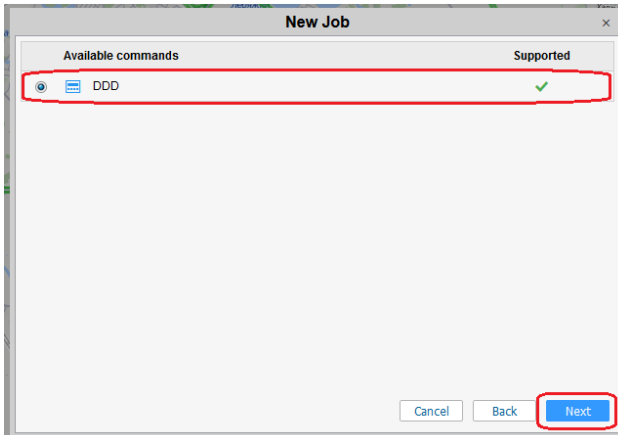
In pop up window select “Execute a command over unit(s)” and press next;



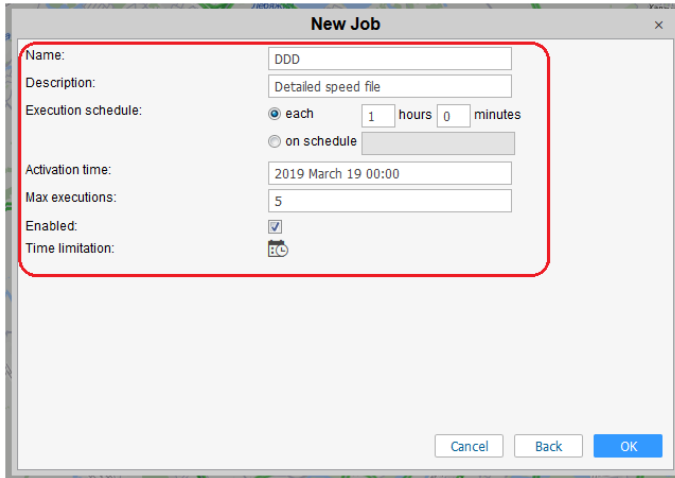
Select devices for which you want to create schedule and press next;



Select command which should be executed and press next;



Enter name of schedule and set how often schedule should be executed and press ok.



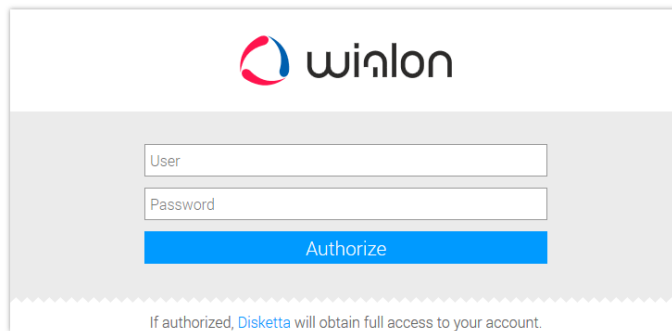
The 'New Job' dialog box contains the following fields and options:

- Name: DDD
- Description: Detailed speed file
- Execution schedule:  each (1 hours 0 minutes) and  on schedule
- Activation time: 2019 March 19 00:00
- Max executions: 5
- Enabled:
- Time limitation:

Buttons: Cancel, Back, OK

## 6. Tachograph files storage

With your logins login to [Wialon Disketa](#), where all DDD files is stored.

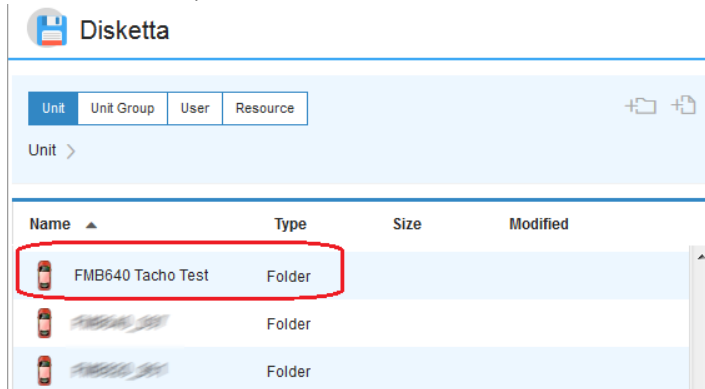


The Wialon login page features the Wialon logo and the following input fields and buttons:

- User: [input field]
- Password: [input field]
- Authorize: [blue button]

Disclaimer: If authorized, Disketta will obtain full access to your account.

Choose device;



The Disketta interface shows a table of available units:

Unit	Unit Group	User	Resource
Unit >			
Name	Type	Size	Modified
FMB640 Tacho Test	Folder		
[blurred]	Folder		
[blurred]	Folder		

The first row, 'FMB640 Tacho Test', is highlighted with a red box.

Select "Protected";

Unit | Unit Group | User | Resource

Unit > FMB640 Tacho Test >

Name ▲	Type	Size	Modified
Protected	Folder		
Public	Folder		

Select "tachograph";

Unit | Unit Group | User | Resource

Unit > FMB640 Tacho Test > Protected >

Name ▲	Type	Size	Modified
tachograph	Folder		

There you will find all downloaded files;

Unit | Unit Group | User | Resource

Unit > FMB640 Tacho Test > Protected > tachograph >

Name ▲	Type	Size	Modified
1552658565173_tac...	ddd	25.5 KiB	2019-03-15 16:05:33
1552660255811_tac...	ddd	25.5 KiB	2019-03-15 16:33:45
1553000207421_tac...	ddd	25.5 KiB	2019-03-19 14:59:37
1553004547864_tac...	ddd	25.5 KiB	2019-03-19 16:12:16

In case if in Wialon is created driver with unique identification number from driver card, then tachograph files will be moved next to this driver.