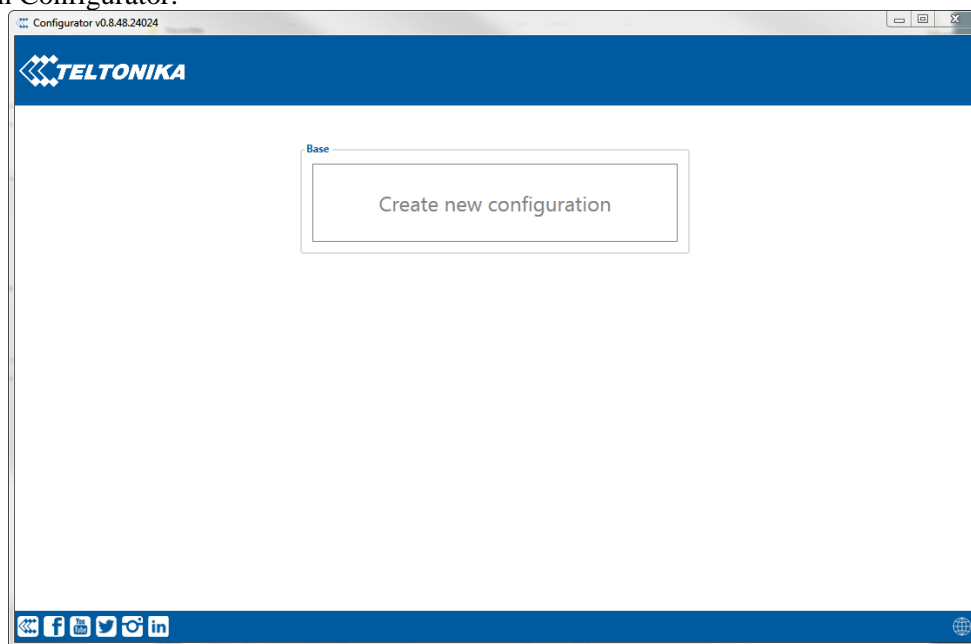
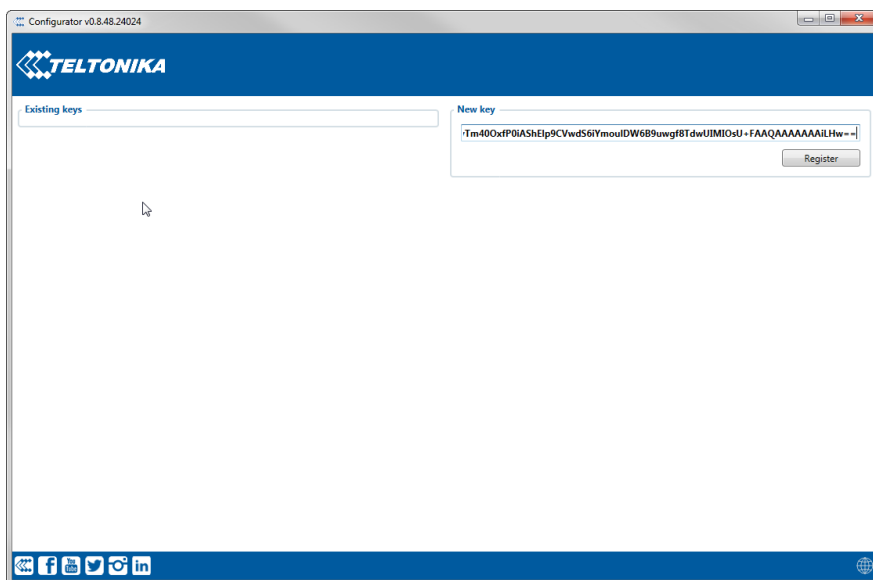


Activating Extended firmware features on your Special firmware

1) Open Configurator:



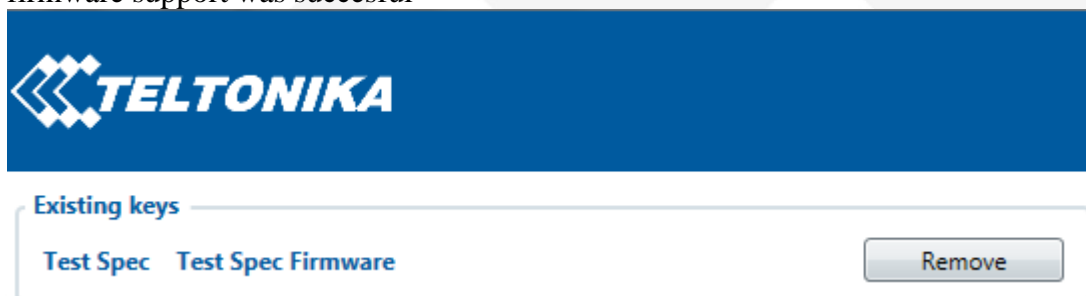
2) On keyboard use CTRL+ALT+I to open Key registering window
New window will open as in screen:



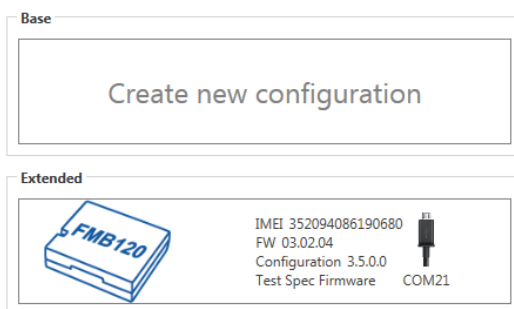
- 3) In new Key field enter key that was received from your Sales manager with firmware, and press register:



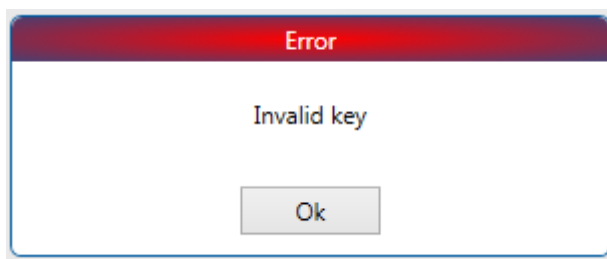
- 4) After entering key will see new „Existing keys“ available. This means adding extended firmware support was succesful



Restart configurator by closing it and opening again. New extended versions of configurator for your firmware will become available.



- 5) If receive this error window after step 3 please contact your Sales manager in Teltonika with:



- 1) Firmware version used
- 2) Configurator version used
- 3) Key you used