

EYE FUNCTIONALITIES NEW

□

Contents

- [1 Page Description](#)
- [2 Functionalities](#)
 - [2.1 Connecting to the device](#)
 - [2.1.1 Flow for firmware versions from 1.2.8.R.1+](#)
 - [2.1.2 PUK code unlock](#)
 - [2.2 Hibernate mode](#)
 - [2.2.1 Send to sleep](#)
 - [2.2.2 Wake up](#)

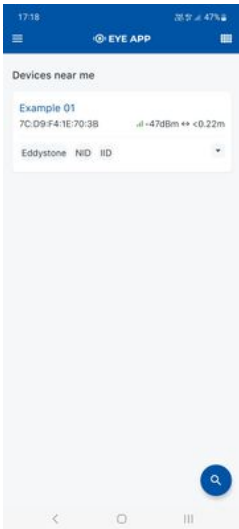


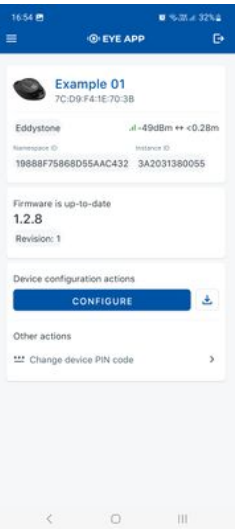
Page Description

This page will describe EYE device functionalities, their flow and functionality supporting software versions.

Functionalities

Connecting to the device

Flow for firmware versions from 1.2.8.R.1+

SW version requirements	EYE APP: 1.2.0-60+ Firmware: 1.2.8.R.1+			
Step No.	1	2	3	4
Short step desc.	Tap the selected device to connect to it	Wait for connection	Enter PIN	Successfully connected
Successful attempt at functionality visual				
	Step No.	1	2	3
Short step desc.	Tap the selected device to connect to it	Wait for device to connect	Enter PIN	You have connected to the device
				Device is fully locked

Additional desc.	Tap the selected device to connect to it	Incorrect PIN has been entered 5 times	Device is locked for 5 min but will allow to connect with PIN again after timeout	Incorrect PIN has been entered 5 times	Device is locked, PIN will no longer be accepted until correct PUK code is entered
------------------	--	--	---	--	--

Failed attempt at functionality visual					
--	--	--	--	--	--

PUK code unlock

SW version requirements

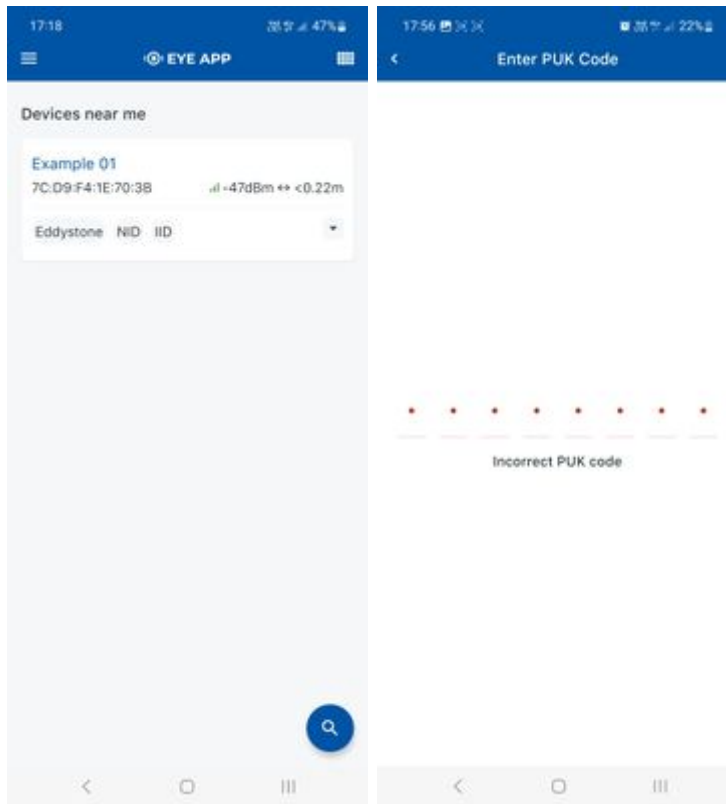
**EYE APP: 1.2.0-60+
Firmware: 1.2.8.R.1+**

Step No.	1	2	3
Short step desc.	Tap the blocked device to connect to it	Enter PUK	Connected
Additional desc.			PIN automatically resets to default

Successful attempt at functionality visual

Step No.	1	2
Step desc.	Tap the selected device to connect to it	Enter PUK incorrectly
Additional desc.	Tap the selected device to connect to it	PUK is rejected and you can only go back or enter correct PUK

Failed attempt at functionality visual



Hibernate mode

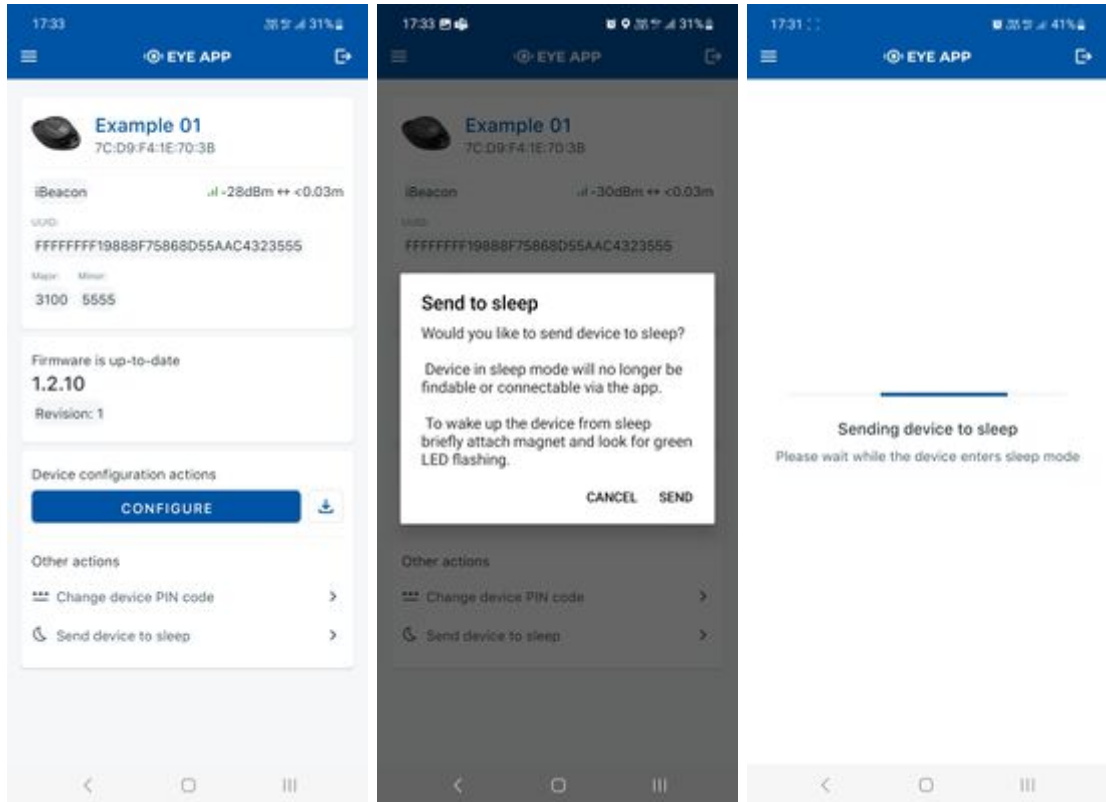
Send to sleep

SW version requirements

EYE APP: 1.2.0-60+
Firmware: 1.2.8.R.1+

Step No.	1	2	3
Short step desc.	While connected and in overview tap "Send device to sleep"	Confirm your selection	Wait for EYE App to disconnect
Additional desc.			Device is no longer connectable or findable until wake up step is performed.

Successful attempt at functionality visual



Wake up

SW version requirements

Firmware: 1.2.8.R.1+

Step No.	1-3	4
Short step desc.	Attach magnet to sleeping device and wait for LED to blink.	Device starts broadcasting
Additional desc.		Now device is discoverable, scannable, connectable via BLE.

Successful attempt at functionality visual

