

FMM125 SMS/Call settings

[Main Page](#) > [Professional Trackers](#) > [FMM125](#) > [FMM125 Configuration](#) > **FMM125 SMS/Call settings**

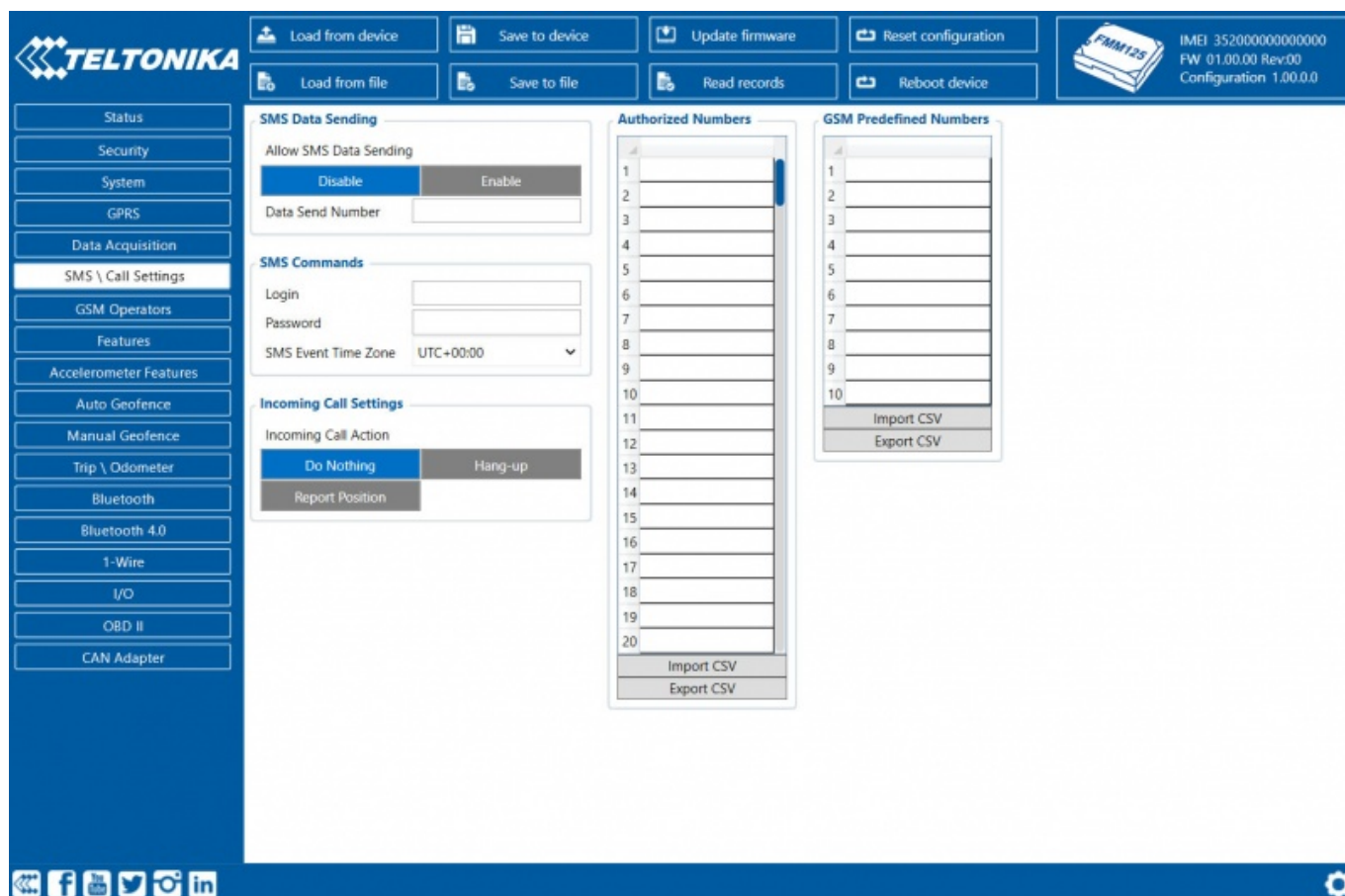


Contents

- [1 SMS Data Sending](#)
- [2 SMS commands](#)

SMS Data Sending

These settings allow sending AVL data using binary SMS. AVL data will be sent by SMS only when there is no GPRS connection. This setting does not affect replies to SMS request messages - answers are always sent back to the sender's telephone number.



SMS commands

Essential fields in *SMS/Call settings* are *Login* and *Password*. The login and password are used with every SMS sent to FMM125. If login and password are not set, in every SMS sent to FMM125 device two spaces before command have to be used (<space><space><command>).

Command structure with set login and password:

<login><space><password><space><command>, for example: "asd 123 getgps"

Phone numbers have to be written in international standard, using "+" is optional but not necessary (in both cases number will be recognized, but when number is without "+" symbol, IDD Prefix will not be generated, which depends on location of the phone). If no numbers are entered, configuration and sending commands over SMS are allowed from all GSM numbers.