

# How to add a BLE preset to the configurator

[Main Page](#) > [Frequently Asked Questions - FAQ](#) > **How to add a BLE preset to the configurator**



## Contents

- [1 How to add a BLE preset to the configurator \(Bluetooth® 4.0 tab\).](#)
  - [1.1 Solution applies for these FM devices](#)
- [2 Disclaimer](#)
  - [2.1 About presets](#)
  - [2.2 Basic list of presets](#)
  - [2.3 Adding presets](#)
  - [2.4 Deleting presets](#)
  - [2.5 Saving your own preset](#)

## How to add a BLE preset to the configurator (Bluetooth® 4.0 tab).

### Solution applies for these FM devices

[FMB003](#) [FMB900](#) [FMB910](#) [FMB920](#) [FMB110](#) [FMB120](#) [FMB122](#) [FMB125](#) [FMB202](#) [FMB204](#) [FMB962](#)  
[FMB964](#) [FMT100](#) [FMM125](#) [FMM130](#) [FMU125](#) [FMU130](#) [FMC125](#) [FMC130](#) [FMC640](#) [FMM640](#)  
[FMP100](#)

## Disclaimer



If you are not using Bluetooth®, **please consider turning it off** or **change Bluetooth® PIN** to remove potential risks.

If you are using Bluetooth® we strongly recommend **using AES encryption** for enhanced security.

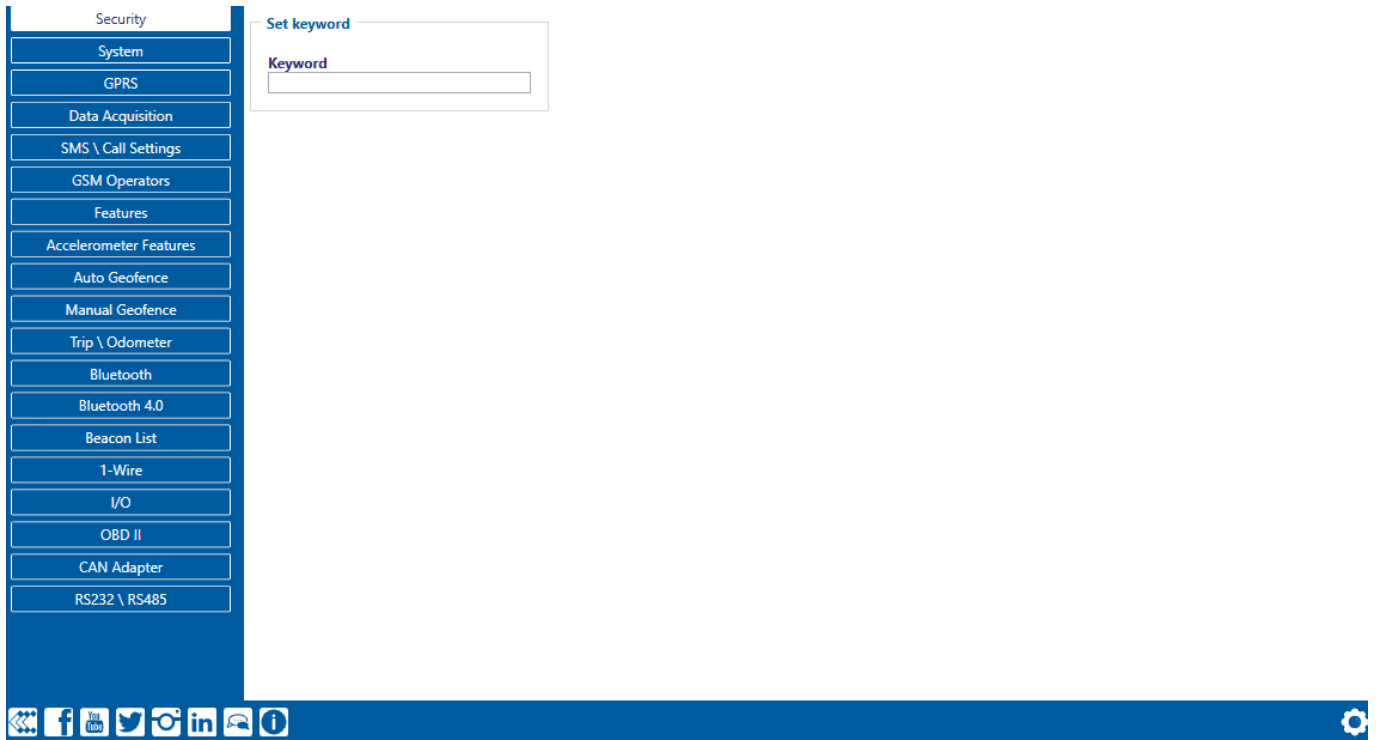
### About presets

Presets - PREpared SETtings for decoding Bluetooth® equipment data (Temperature Sensors, Humidity Sensors, Motion Sensors, Fuel Level Sensors, etc.).

### Basic list of presets

You can find a basic list of presets here:

*Device settings => Bluetooth® 4.0 tab => Connection number => Advanced mode => Preset selection.*



## Adding presets

You can add presets (XML format) to the configurator (Bluetooth® 4.0 tab) if your BLE equipment is not supported by the standard set of presets.

All saved presets are located here: *C:\Users\<user>\Documents\Presets*

A prepared preset must be added to the main list:

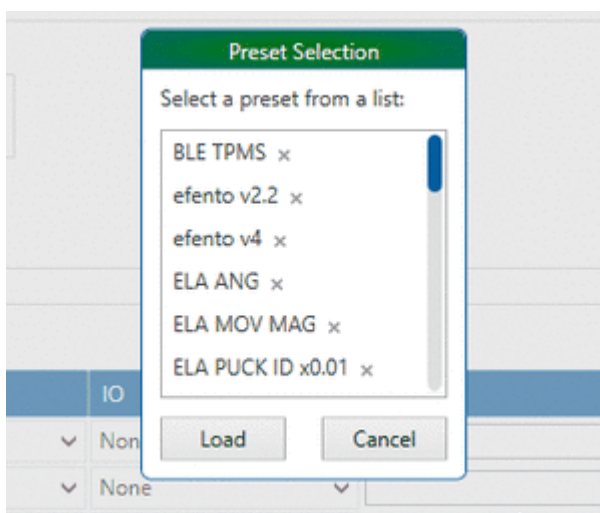


It is enough to reopen the presets window to see the updated list:



## Deleting presets

You can delete a preset, in which case it will be deleted from the general list:



## Saving your own preset

You can also save your own settings to a new preset. To do this, use the "Preset save" button and enter the name. In this case you can find your preset in the general list:

- SMS \ Call Settings
- GSM Operators
- Features
- Accelerometer Features
- Auto Geofence
- Manual Geofence
- Trip \ Odometer
- Bluetooth
- Bluetooth 4.0
- Beacon List
- 1-Wire
- I/O
- OBD II
- CAN Adapter
- RS232 \ RS485

**Connection #1**

**Mode**

Working mode

Disabled
TZ-BT04/05/05B sensor

Advanced

**Settings**

MAC

**1st Sensor**

Type	Data Offset	Data Size	Action	IO	Match	Endianness
FF	3	2	Match	None	2DF7	Little Endian
FF	4	6	Save	Fuel Frequency		Big Endian
FF	9	2	Save	Temperature		Little Endian
FF	11	2	Save	Custom		Little Endian
FF	12	2	Save			Big Endian
FF	12	1	Save			Big Endian
FF	16	4	Save			Big Endian
	0	0	Match	None		Little Endian
	0	0	Match	None		Little Endian

You can also find the XML version of the preset here: `C:\Users\<user>\Documents\Presets`

