

Teltonika Configurator Introduction

[Main Page](#) > [Software & Applications](#) > [Teltonika Configurator](#) > **Teltonika Configurator Introduction**



Contents

- [1 Teltonika Configurator Supported Hardware](#)
- [2 Getting started](#)
- [3 Main menu](#)
 - [3.1 Configure connected device](#)
 - [3.2 Creating a new configuration](#)
 - [3.3 Opening an existing configuration](#)



Teltonika Configurator software is a sophisticated tracker management tool. With just one application you can manage several types of devices.

Implemented since the launch of the FMB platform, this tool lets you also make a fast and easy configuration, firmware updates, device diagnostics, status check and debug. Configurator supports connection over USB cable and Bluetooth®. Advanced tool tips integration allows you to use configurator without any user manuals.

Teltonika Configurator Supported Hardware

- FMB9XY
- FMB96X
- FMB1XY
- FMB0XY
- FMB2XY
- FMB640
- FM30XY
- FMC0YX
- FMU1XY
- FMC1XY
- FMM0YX
- FMM1XY
- FMC6XY
- FMM6XY
- FMT100
- FMP100
- MTB100

To download the latest version or a specific version of the Teltonika Configurator, click the link below.

[Configurator versions](#)

For more details on the specific parameters that can be changed in the Teltonika Configurator, please go to the Configuration section of the wiki page of your device. A list of all device wiki pages can be found [here](#).

Getting started

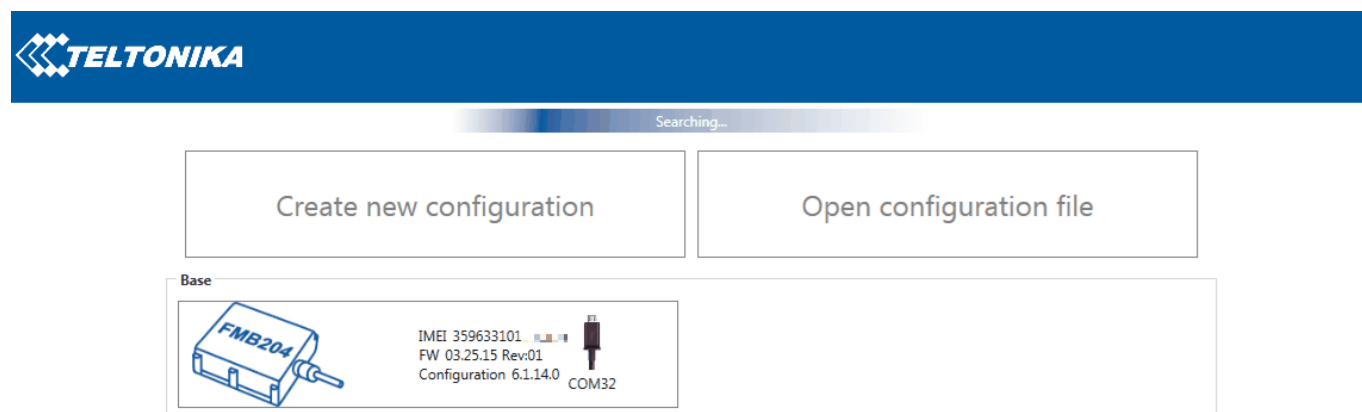
In order to start, you must first download an appropriate version of the Teltonika Configurator from the [Configurator versions](#) page. Configurator versions are released alongside firmware versions in order to support any new functionality that might be implemented. Devices with old firmware or experimental firmware might not be compatible with the newest stable release of the configurator, that is why the newest version is not always the best fit. If the version you require is not available on the Configurator versions page, contact your sales representative.

Main menu

The configurator can be used to configure a device, but it can also be used to create or tweak a configuration without having to connect a device. The option to create a new configuration or to open an existing configuration file is always available.

Configure connected device

To start configuring a connected device, simply click on the button that shows what device the configurator can see.



Creating a new configuration

To create a new configuration, click the "Create new configuration" button in the main menu of the configurator. Then choose what device you want to create a configuration for, and then select the firmware version that the configuration should support. This will then take you to the configuration screen.

Create new configuration

Open configuration file



Opening an existing configuration

To edit an existing configuration, click the "Open configuration file" button in the main menu of the configurator. This will prompt you to select the configuration file. After selecting the file you want to edit, it will take you to the configuration screen.