

Wialon+DUAL CAM solution



Contents

- [1 DUAL CAM on Wialon platform](#)
- [2 Device configuration](#)
- [3 Wialon configuration](#)

DUAL CAM on Wialon platform

For monitoring our device we have a lot of third-party platforms but only one at the moment which supports the [DUAL CAM](#) solution is Wialon. In this chapter, we will show you how to configure the device and also how to configure the Wialon platform for receiving information from DUAL CAM.

Device configuration

Step 1

Enable codec 8 extended.



Step 2

Configure Domain and Port for the device to send data to the Wialon. This information you will find then you register the device in Wialon

Step 3

Got to I/O element and select Rear Camera state and Front camera State priority to Low.



Step 4

Go to RS232/RS485 and enable DualCam and configure the DualCam image sending setting for your needs.



Step 5

Dual Cam server settings will be different:

Domain: Will be the same as from Wialon for the device

Port: 22148

DualCam Server Settings

Domain

Port

Step 6

Dual Cam Video settings, for the video settings only select Video frame rate to 30 FPS.

Note: Do not activate Video Sending Triggers in the configurator, because if you set this setting and the device triggered video the Wialon platform will not accept it. So only from the Wialon side must be set video commands in the next chapter Wialon settings we will show how to configure it.

Note: From now Wialon video solution needs additional activation due to billing release. Please contact your distributor or Wialon sale manager.



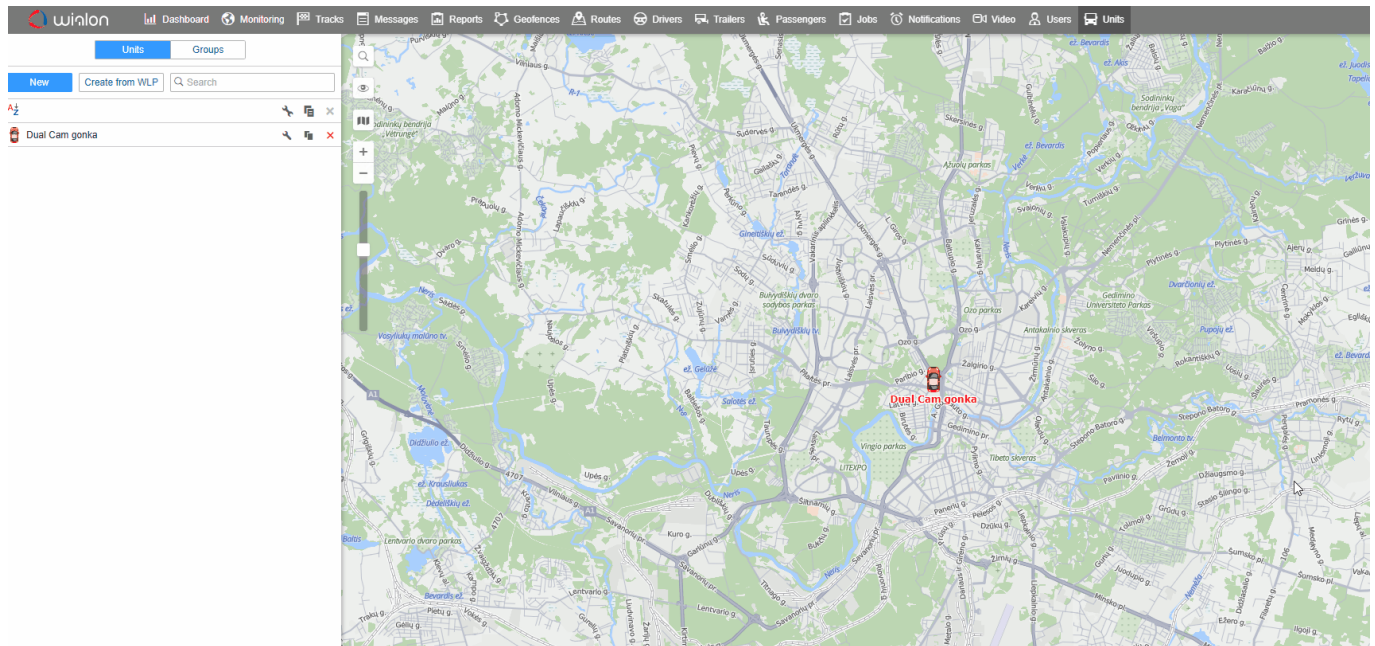
Wialon configuration

Step 1

Login into Wialon and go to the Units and select New.

Configure the device and activate DualCam according to the GIF.

Note: You must enter device IMEI in "Unique ID" to identify device in Wialon platform.



Step 2

Set the command to request a photo.

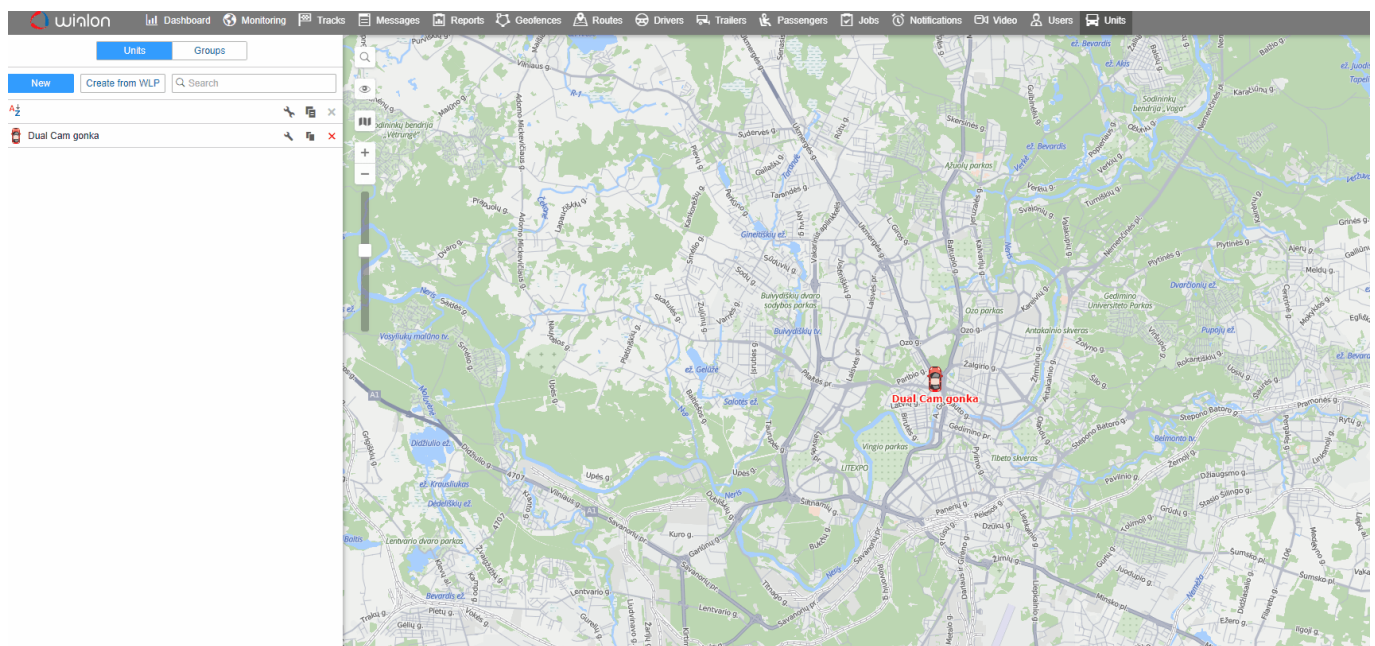
Go to Units tab and push on "wrench" icon.

Now select "Commands" and press new.

Then you should press "New" button to call out new window.

You'll need to create the name of the command and select the command type according to the GIF.

After that press ok and the command will appear.

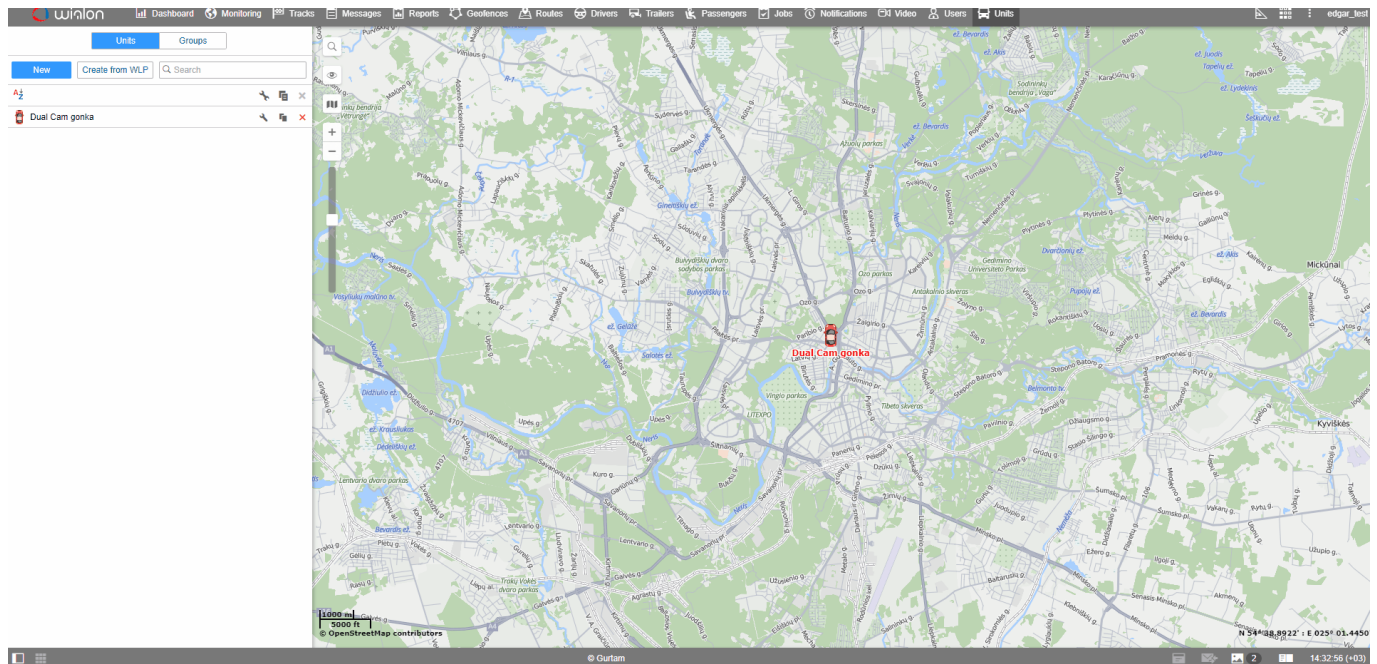


Step 3

After the command was created, you should to go to the "Monitoring" tab, select needed device and press the arrow and select GPRS.

After that select from which camera you need to get front-rear photo and press ok.

After you will see new window opened and command was sent, you will see that new picture arrived from the rear camera and then from the front.

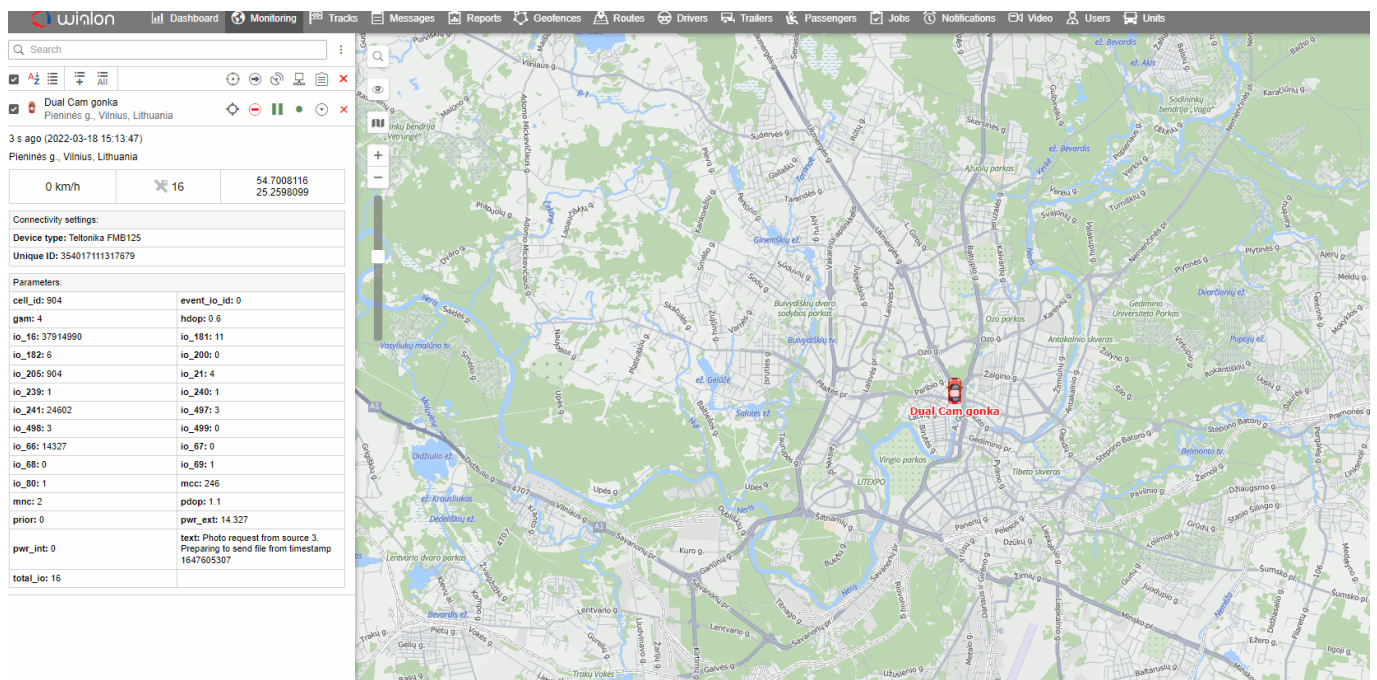


Step 4

Video request set up.

First open unit properties.

Than, go to the "Video" section, select "Set cameras", choose Cam 1 Cam 2 and pres ok twice.

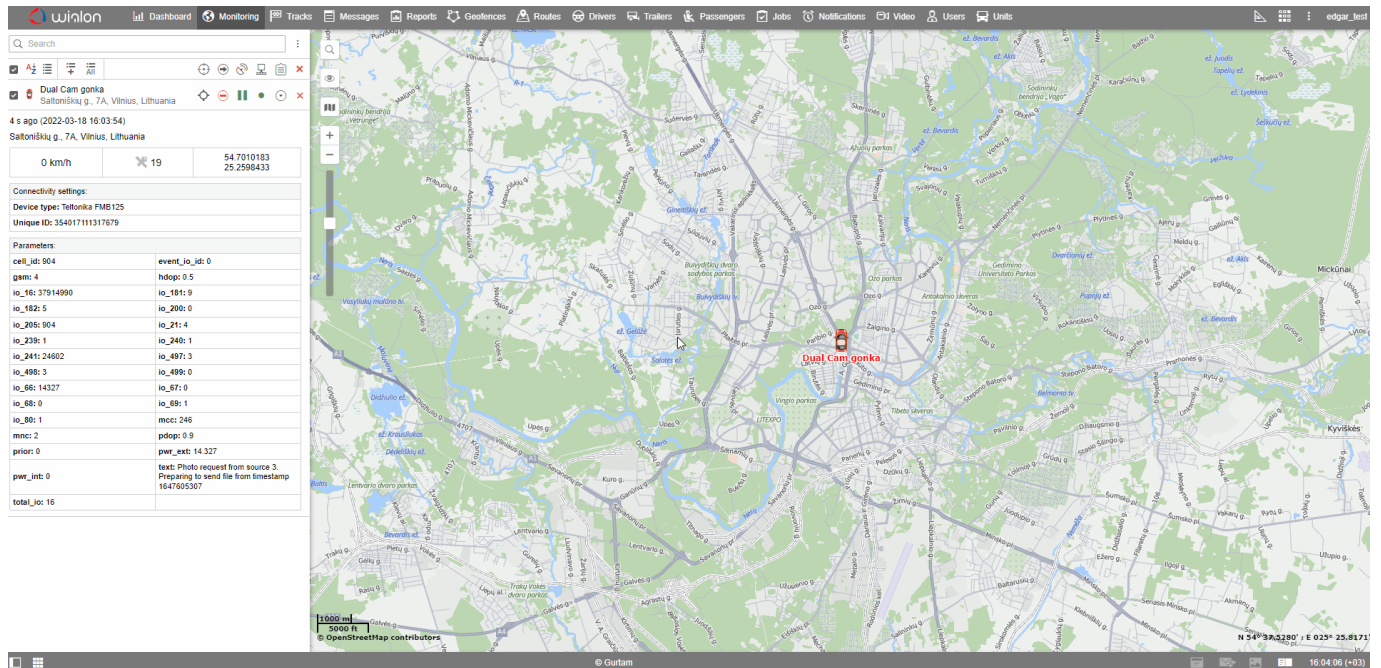


Step 5

To request a video go to the "Video" section, select "Playback", select "save requested file to Files",

select "Unit". After setting date and time of the video you need, press "Request". Wialon will generate a message and show the files in the "Files" section. Finally, it will be sent to Wialon.

Note: We recommend creating a notification with the same time intervals and no more than +/-15 sec. The video file duration can be max 30 sec (according device limitation).



Step 6

If you need to set a video request from using trigger, it should be done from Wialon side.

Go to "Notification" tab, select "New", select "Device", and here choose required triggers.

In GIF below, you can see an example of the trigger set on Digital Input. After configuring the command and selecting "ok", command will appear and if Digital Input will be triggered you will receive video.

